

LILLIAN PARK 45 & 77 DUNFIELD AVE

URBAN
STRATEGIES
INC .

COMMUNITY SERVICES & FACILITIES STUDY

Updated for Rezoning Resubmission
February 2015



TABLE OF CONTENTS

EXECUTIVE SUMMARY 4

- Demographic Profile 4
- Facilities Inventory 4
- Conclusions 5

INTRODUCTION 6

ABOUT THE DEVELOPMENT 8

DEMOGRAPHIC PROFILE 10

- Population & Age 11
- Household Composition 12
- Housing 12
- Immigrant Population 13
- Labour Force 14
- Socio-economic Characteristics 15

FACILITIES INVENTORY 16

- Schools 17
- Recreation Centres, Pools & Arenas 20
- Parks & Open Spaces 22
- Childcare Providers 24
- Places of Worship 26
- Services 28
- Libraries 30

CONCLUSIONS 32

APPENDIX A: DETAILED STATISTICS 34

APPENDIX B: DETAILED LIST OF FACILITIES 40

EXECUTIVE SUMMARY

This Community Services and Facilities Study has been prepared in support of an application to amend Zoning By-law 438-86 to facilitate the development of Gallery Park at 45 and 77 Dunfield Ave, near the intersection of Yonge St and Eglinton Ave.

The purpose of this study is to help assess the degree to which the proposed development will impact existing public services and facilities in the area.

The study area was determined in consultation with City staff as an approximation of the general distance residents are willing to travel for services, and consists of five census tracts.

The report contains five sections: an introduction, a brief description of the proposed development, a demographic profile of the study area, an inventory of services and facilities, and final conclusions.

Demographic Profile

The demographic profile was prepared using 2011 Census and National Household Survey data compared against the Toronto Community Profile.

The following are key findings from the analysis:

- The study area's population has been growing nearly four times faster than the City at large (16.8% vs 4.5%);
- The study area contains a much higher proportion of adults aged 25-39 and a much smaller proportion of children aged 0-19 than the rest of the City;
- There are significantly fewer families with children at home and a significantly greater proportion of single person households than the City at large;
- A much greater proportion of the population lives in apartment buildings (both 5 storeys and up and under 5 storeys) than the rest of the City;

- Immigrants make up a smaller proportion of the population and English is more commonly spoken at home in the study area compared to the City at large;
- In the study area, labour force participation and educational achievement are higher than the rest of the city, and unemployment rates are lower;
- Both average household and average family income are significantly higher in the study area than the City at large;
- Total estimated population growth in the study area associated with proposed and approved development is approximately 12,800.

Facilities Inventory

The facilities inventory was prepared through discussion with City staff, planning staff at the two school boards, phone conversations with various service providers, and Internet research. Facilities examined were schools, city-run recreation centres (including community centres, pools, and arenas), libraries, parks and open spaces, childcare providers, human services, and places of worship.

The inventory found that the study area is served by two existing recreational facilities, nine places of worship, the Northern District Library, 12 existing childcare providers, and 53 diverse human service organizations.

A canvass of childcare providers indicated that vacancy was available for all age groups, though only one provider had vacancy for infants.

Conversations with key human services providers indicated that while the area is well served, lack of affordable space within the community is an issue for agencies that provide services outside of their primary office space.

While the study area contains 10 parks, the large majority of the study area is within the two lowest quintiles of the City's Local Parkland Provision Levels, making the provision of additional parks and open spaces a priority.

While there is sufficient capacity at both the Toronto District School Board (TDSB) and Toronto Catholic District School Board (TCDSB) to accommodate new elementary school students, capacity at the secondary school level is constrained.

There are two TDSB secondary schools and one TCDSB secondary school within the study area. The TDSB North Toronto Collegiate Institute and TCDSB Marshall McLuhan secondary school are both operating significantly over capacity, whereas the TDSB Northern Secondary School is operating under capacity with 35 available spots.

Applying pupil yield factors supplied by both school boards indicates that the proposed development will generate an estimated 24 new secondary school students. While total secondary school enrollment exceeds total secondary school capacity within the study area, the TDSB Northern Secondary School located less than one kilometre from the development still has more than enough capacity with 35 available spots to accommodate the estimated 24 new secondary school students associated with the proposed development.

Conclusions

The findings of the demographic profile analysis suggests that the low number of children in the study area may translate into a relatively lower demand for school facilities, childcare providers, and other youth-centered services and facilities when compared to the rest of the City. Higher educational achievement, labour force participation, and average family and household income indicate a relatively reduced demand for a number of types of human services as well. This is further supported by the fact that the study area has a lower proportion of immigrants. However, with a growing population and a larger proportion of the population living in apartment buildings in the study area, there is a greater demand for the provision of parks and open spaces.

While the secondary school system in the area is constrained, there is sufficient capacity at the Northern Secondary school to accommodate increased enrollment associated with the proposed development.

The inventory of services indicates that generally a wide range of public services and facilities are present in the area, and that the proposed development will not unduly tax existing facilities. With this said, affordable flexible community space for human services providers operating in the study area would be beneficial, and the area could benefit from additional childcare service providers, particularly in the infant age range. The other major constraint in the study area relates to the provision of parks and open spaces.

The proposed development attempts to address these deficiencies by providing 120sm of flexible indoor community space, as well as a 510sm daycare for infants, toddlers and preschoolers. The proposed development also increases publicly accessible open space on the subject site, which works to address the existing shortfall of parks and open spaces in the study area.

PART ONE // INTRODUCTION

This Community Services & Facilities Study has been prepared in support of an application to amend Zoning By-law 438-86 to facilitate the development of Gallery Park at 45 and 77 Dunfield Ave, near the intersection of Yonge St and Eglinton Ave. Consisting of two new rental apartment towers and one gallery, the proposed redevelopment seeks to create a neighbourhood legacy. New rental apartments include a number of family sized units, providing the growing Yonge and Eglinton neighbourhood with a more diverse and permanent form of housing tenure. Given the lack of publicly accessible open space and an existing condition where a portion of the site is used as de-facto public open space by the local community, the project places a high priority on improving access and expanding public open space. Open space will be increased from 47% to 67% on the subject site, all of which will be made available to the public. Finally, the inclusion of the new art gallery increases public access to space for community uses, and creates an ongoing opportunity to appreciate a curated world class art collection.

The purpose of this study is to help assess the degree to which the residential component of the redevelopment will impact existing public services and facilities in the area. The study presents all mandatory information as per the Toronto Development Guide, including a demographic profile of the community (compiled through an analysis of 2011 Census and 2011 National Household Survey data) and an inventory of existing services – schools, parks, City-run recreation facilities, libraries, daycares, and human services – including, where available, enrollment capacities and utilization information.

The study area was determined in consultation with City staff as an approximation of the general distance residents are willing to travel for services, and consists of five census tracts. The information was gathered with assistance from various City of Toronto planning staff, the two School Boards serving the City, and online research.

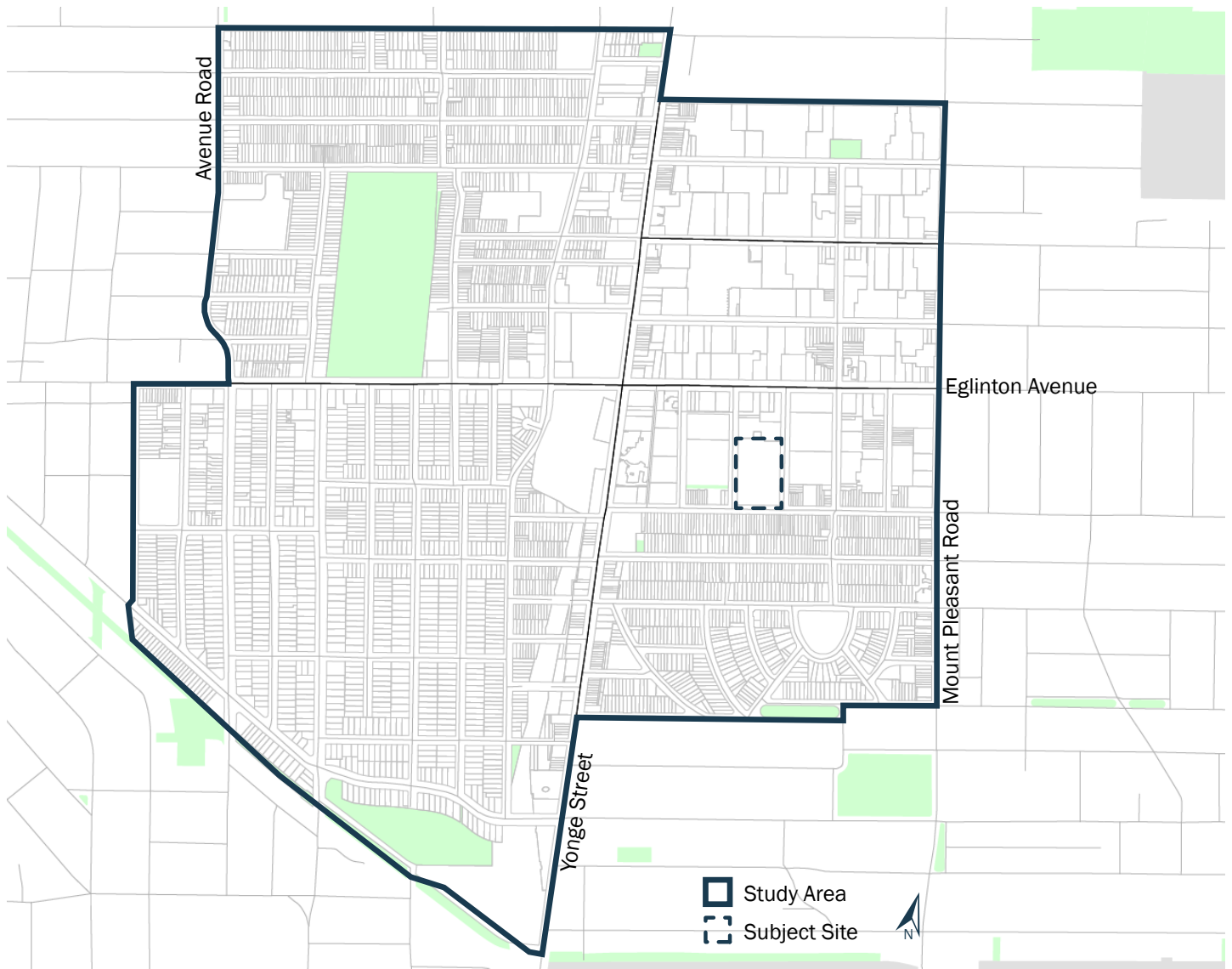


Figure 1: Study Area

PART TWO // ABOUT THE DEVELOPMENT

This Community Services and Facilities study is concerned with the proposed redevelopment of Gallery Park, municipally known as 45 Dunfield Ave and 77 Dunfield Ave, hereafter referred to as the 'subject site'.

The subject site is located in the Yonge & Eglinton neighbourhood, which is provincially and municipally recognized as one of the four major centres that will absorb a large proportion of Toronto's estimated 2.5 million growth in population.

The Yonge & Eglinton neighbourhood was recognized as one of the four major urban growth centres in the Growth Plan for Greater Golden Horseshoe, 2005 for a number of reasons, primarily because of the access to existing and proposed rapid public transit infrastructure, as well as a mix of retail, commercial and employment uses. The subject site is within close walking distance of the Eglinton Subway station on the Yonge Subway line, and will also be within close walking distance of the future Eglinton and Mt. Pleasant stations on the Eglinton Crosstown LRT line. Furthermore, the subject site is within walking distance of 14 different bus routes.

The subject site currently consists of several elements, including a 17 storey senior's rental apartment, a 28 storey rental apartment, a large indoor pool, a surface parking lot and a significant amount of unprogrammed green space. A portion of the subject site also consists of a 1000 m² parkette that was leased by the landowner to the City of Toronto in 2002 for use as a public park for a minimum term of 50 years to a maximum term of 99 years.

The proposed redevelopment of the subject site consists of two rental apartment buildings (26 and 24 storeys, respectively) and an integrated daycare facility. The three new buildings will be built over the southern portion of the subject site on what is currently a surface parking lot and the site of the indoor pool facility. The buildings are designed and located to fit within the context of the surrounding neighbourhood's built form, and to increase permeability through the subject site.

The two new rental apartment buildings will provide 519 rental units, increasing the provision of rental units in the area.

The proposed redevelopment provides 120sm of flexible indoor community space, as well as 510sm of daycare space for infants, toddlers and preschoolers. Furthermore, the existing publicly accessible open space on the subject site (which is used in large part by dog owners in the community) has been further supplemented throughout, particularly adjacent to the existing parkette, creating a larger green open space for community use.

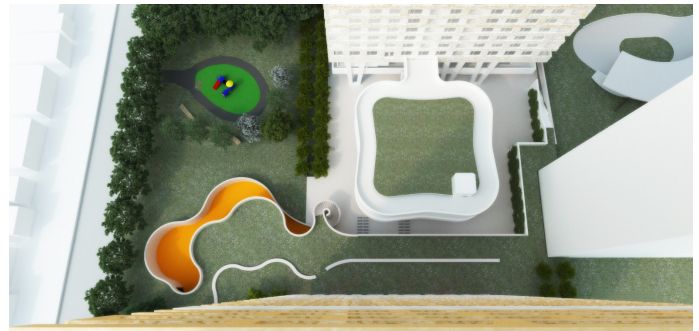


Figure 2: Proposed Development Concept, Plan View



Figure 3: Proposed Development Concept, Looking Northwest

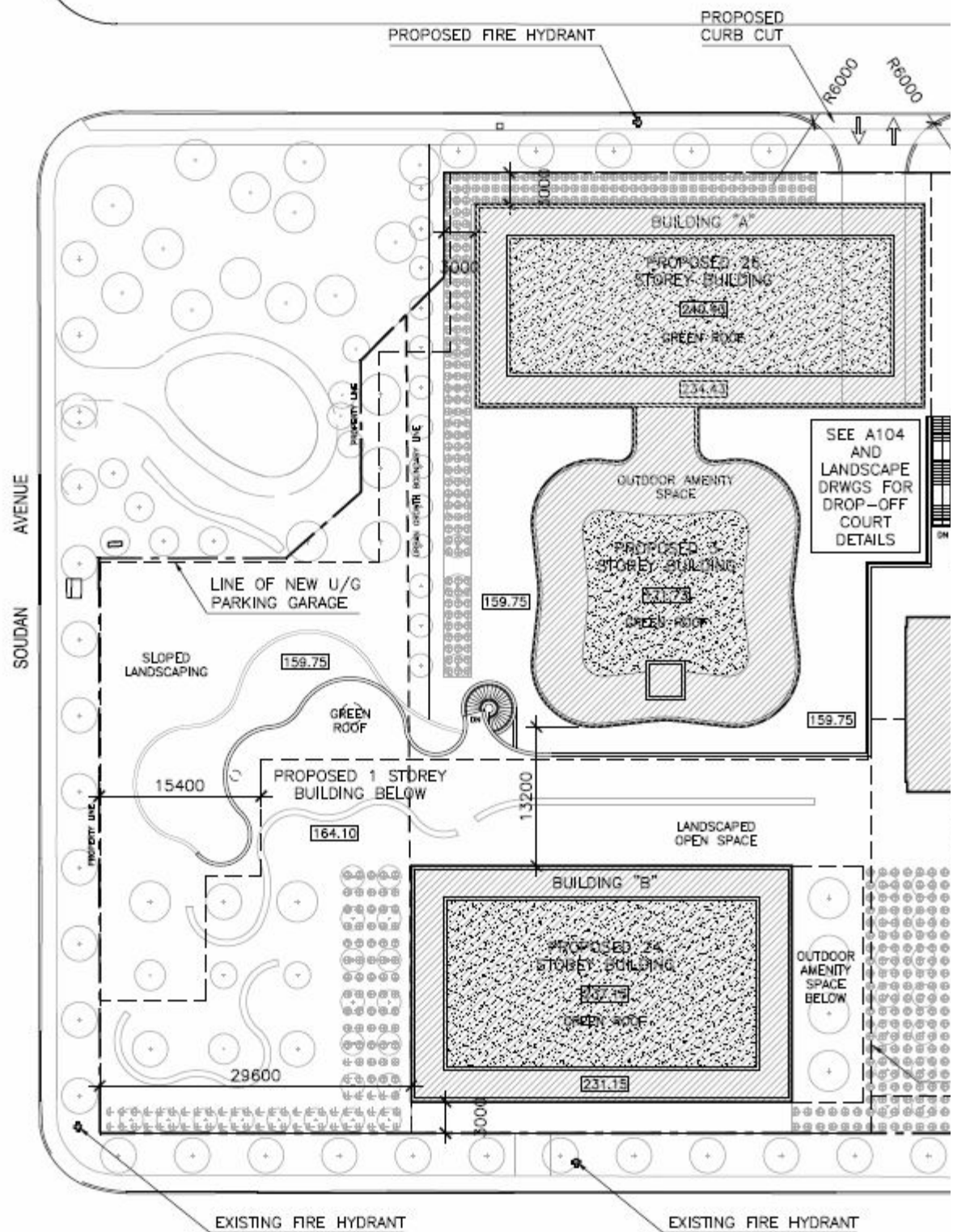


Figure 4: Proposed Site Plan

PART THREE // DEMOGRAPHIC PROFILE

This section analyzes the study area's demographic profile by comparing it to the City of Toronto Community Profile. The analysis is derived from the 2011 Census data and data from the voluntary 2011 National Household Survey, provided by the City of Toronto Research and Information division of City Planning. This section provides highlights from the demographic analysis, while a detailed list of all of the data examined has been included in Appendix A of this report.

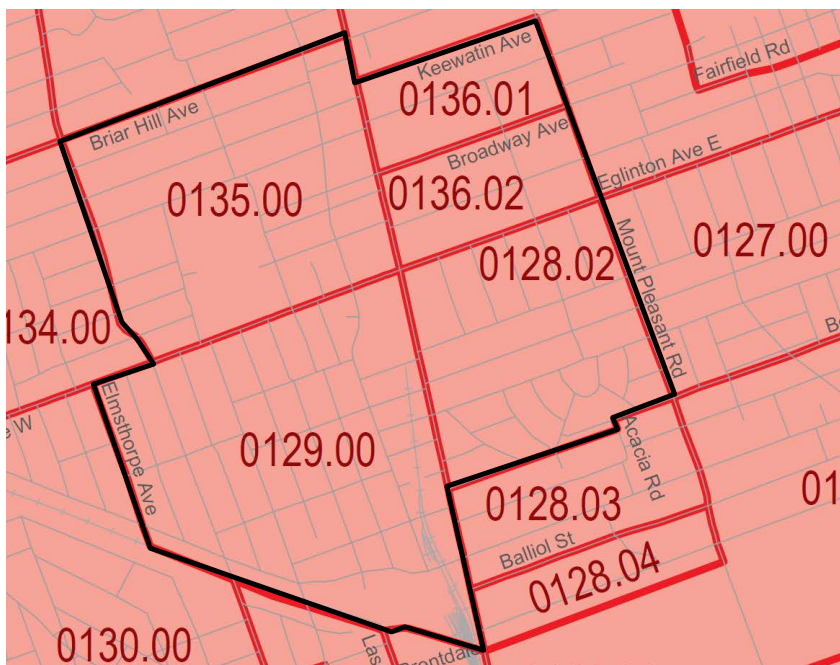


Figure 5: Study Area Census Tracts

Population & Age

The population of the study area is 29,995 people. The population increased (+) 16.8% between 2006 and 2011. This growth is considerably more than the City's growth of (+) 4.5% over the same time period.

The age distribution of the study area differs considerably from the City in that it contains fewer children under 19, and significantly more adults between 25 and 39. This information suggests that compared to the City at large, there is a lower demand for primary and secondary school facilities, childcare centres, and other youth-centered services and facilities.

Population Year	Study Area	Toronto
Population in 2011	29,995	2,615,060
Population in 2006	25,668	2,503,281
2006 to 2011 population change (%)	16.8	4.5

Figure 6: Population

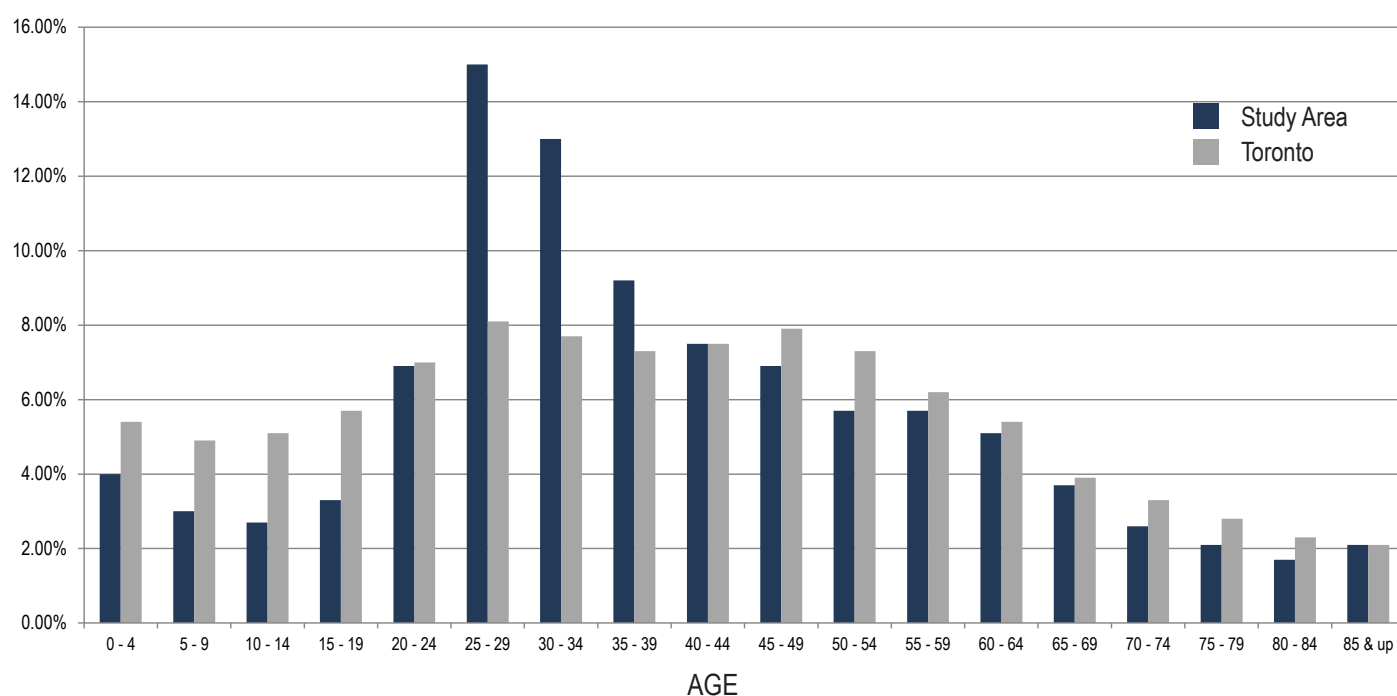


Figure 7: Age Distribution by Total Percentage of Population

Household Composition

The study area is home to 17,200 private households and 6,925 families. Of these families, 5,890 are couples and 1,040 are lone-parents. In the study area there are significantly fewer families with children than the City of Toronto (48.1% vs 66.5%), and couple families with children at home mirror this (38.9% vs 57.4%). There are significantly more 1 person households in the study area compared to the City (53.6% vs 31.6%), whereas the City has significantly more 3, 4-5, and 6 or more person households.

Family Characteristics	Study Area	Toronto
Families	6,925	690,335
Without children	3,585 (51.8%)	231,595 (33.5%)
With children	3,330 (48.1%)	458,745 (66.5%)
Couple families	5,890 (85.1%)	543,355 (78.7%)
Couple families: children at home	2,290 (38.9%)	311,760 (57.4%)
Lone-parent families	1,040 (15%)	146,985 (21.3%)
Average # children at home per family	0.7	1.1

Figure 8: Family Characteristics

Household Size	Study Area	Toronto
Total number of private households	17,200	1,047,885
1 person	9,225 (53.6%)	331,180 (31.6%)
2 persons	5,125 (29.8%)	307,845 (29.4%)
3 persons	1,540 (9%)	168,750 (16.1%)
4-5 persons	1,255 (7.3%)	201,765 (19.3%)
6 or more persons	55 (0.3%)	38,345 (3.7%)
Average # of persons per household	1.7	2.5

Figure 9: Household Size

Housing

A much higher percentage of the population in the study area live in apartment buildings that are 5 or more stories compared to the City at large (63.9% vs 41%). The percentage of the population living in apartments under 5 stories is also greater than the City (18.4% vs 10%). Much of this difference is reflected in the relatively low percentage of people living in single-detached houses in the study area (10.6% vs 26.2%); percentages of semi-detached, row houses, and duplexes are also significantly lower for the study area.

Housing Characteristics	Study Area	Toronto
Total occupied private dwellings	17,200	1,047,875
Single-detached house	1,815 (10.6%)	275,015 (26.2%)
Semi detached house	660 (3.8%)	72,400 (6.9%)
Row house	120 (0.7%)	60,295 (5.8%)
Apartment; duplex	415 (2.4%)	44,740 (4.3%)
Apartment; building under 5 storeys	3,170 (18.4%)	163,895 (15.6%)
Apartment; building 5 or more storeys	10,990 (63.9%)	429,225 (41%)

Figure 10: Housing Characteristics

Immigrant Population

Immigrants make up less of the total population of the study area compared to the City at large (33.1% vs 48.6%). Accordingly, proportionally more residents speak English at home compared to the City (85.5% vs 68.9%). The period of immigration for immigrants in the study area is similar to the City, with the greatest difference in the 2001 to 2011 period indicating that the study area has a larger percentage of recent immigrants than the City at large (39.9% vs 32.9%). Comparing the top 5 recent immigrant groups by region of birth indicates that when compared to the City, the study area has a significantly greater Iranian population, and also a significantly larger proportion of European and Russian immigrants.

Immigrants	Study Area	Toronto
Total Population by Immigrant Status	29,740	2,576,030
Non-Immigrant population	18,700 (62.9%)	1,258,870 (48.9%)
Immigrant population	9,850 (33.1%)	1,252,215 (48.6%)
Non-permanent residents	1,175 (4%)	64,945 (2.5%)

Figure 11: Immigrant Population

Top 5 Home Languages	Study Area	Toronto
#1	English (85.5%)	English (68.9%)
#2	Persian/Farsi (1.7%)	Cantonese (2.8%)
#3	Spanish (1.6%)	*Chinese, n.o.s. (2.6%)
#4	Korean (1.5%)	Mandarin (2.1%)
#5	Russian (1.1%)	Tamil (2%)

Figure 13: Top 5 Languages Spoken at Home

Period of Immigration	Study Area	Toronto
Total pop. by period of immigration	2,290	1,252,215
Before 1971	1,510 (15.3%)	191,000 (15.2%)
1971 to 1980	1,030 (10.5%)	150,585 (12%)
1981 to 1990	1,385 (14.1%)	185,680 (14.8%)
1991 to 2000	2,005 (20.4%)	314,470 (25.1%)
2001 to 2011	3,930 (39.9%)	411,480 (32.9%)

Figure 12: Immigrant Population by Period of Immigration

Top 5 Rec. Imm. (Region)	Study Area	Toronto
#1	Iran (10.7%)	Philippines (14.5%)
#2	China (7.4%)	China (13.4%)
#3	Philippines (7.2%)	India (9.8%)
#4	Europe - other (6.8%)	Iran (4.5%)
#5	Russian Federation (6.1%)	Sri Lanka (4.4%)

Figure 14: Top 5 Recent Immigrant Groups by Region of Birth

Labour Force

The study area's population has a significantly higher labour force participate rate than the City at large (74.5% vs 64.3%) and unemployment in the study area is significantly lower than the City (5.2% vs 9.3%). The study area has a higher proportion of occupation types in 'Management', 'Business, Finance and Administration', 'Natural & Applied Sciences', 'Social Science, Education, and Government', and 'Art; Culture; Recreation; and Sport' compared to the City at large, with fewer occupation types in 'Sales and Service', 'Trades; Transport and Equipment Operators', 'Unique to Primary Industry', and 'Unique to Processing; Manufacturing and Utilities'.

Labour Force	Study Area	Toronto
Total pop 15 year & up by activity	26,845	2,175,830
In the labour force	19,990	1,399,985
Employed	18,595	1,269,150
Unemployed	1,385	130,835
Not in the labour force	6,850	775,845
Participation rate	74.5%	64.3%
Employment-population ratio	69.3%	58.3%
Unemployment rate	5.2%	9.3%

Figure 15: Labour Force Characteristics

Occupations	Study Area	Toronto
All occupations	19,605	1,349,190
Management	3,015 (15.4%)	153,440 (11.4%)
Business, finance & administration	4,670 (23.8%)	256,410 (19%)
Natural & applied sciences & related	2,135 (10.9%)	111,835 (8.3%)
Health	1,115 (5.7%)	72,980 (5.4%)
Social science, education, government services, & religion	3,150 (16.1%)	174,850 (13%)
Art, culture, recreation & sport	1,345 (6.9%)	72,110 (5.3%)
Sales & service	3,360 (17.1%)	315,905 (23.4%)
Trades, transport & equipment operators & related	620 (3.2%)	121,260 (9%)
Unique to primary industry	--- (0%)	7,235 (0.5%)
Unique to processing, manufacturing & utilities	150 (0.8%)	63,165 (4.7%)

Figure 16: Occupation Types

Socio-economic Characteristics

In the study area, a higher proportion of the population has achieved a postsecondary certificate, diploma or degree compared to the City at large (78.9% vs 68.9%). This trend is mirrored when looking at the proportion of the population that has achieved a Bachelor degree or higher (54.1% for the study area vs 40.3% for the City).

The average income for economic families in the study area is much higher than the City at large (\$139,897 vs \$105,526). This trend is mirrored for private households (\$96,010 vs \$87,038). The percentage of families with low income after taxes is lower in the study area than in the City at large (15.5% vs 19.3%).

Education	Study Area	Toronto
Total population aged 15 to 64 years by highest achievement	26,840	1,491,885
No certificate, diploma, or degree	1,620 (6%)	158,285 (10.6%)
High school diploma or equivalent	4,030 (15%)	306,005 (20.5%)
Postsecondary certificate, diploma or degree	21,175 (78.9%)	1,027,595 (68.9%)
Apprenticeship or trades certificate or diploma	855 (3.2%)	77,465 (5.2%)
College, CEGEP or other non-university certificate or diploma	4,370 (16.3%)	260,810 (17.5%)
University certificate or diploma below bachelor level	1,435 (5.3%)	87,620 (5.9%)
University certificate, diploma or degree at bachelor level or above	14,510 (54.1%)	601,700 (40.3%)
Bachelor's degree	8,650 (32.2%)	362,580 (24.3%)
University certificate, diploma or degree above bachelor level	5,868 (21.9%)	239,120 (16%)

Figure 17: Educational Achievement

Income	Study Area	Toronto
Total Economic Families	7,065	675,895
Average 2010 Family income	\$139,897	\$105,526
Total Private households	17,200	1,047,875
Average 2010 household income	\$96,010	\$87,038
Total population in private households	29,735	2,576,030
Low income in 2010 (after-tax low income measure %)	15.5%	19.3%

Figure 18: Income Characteristics

Population Growth

The table on the following page outlines proposed and approved development applications in the study area, including their approval status and proposed units by type. Utilizing population estimate factors for each unit type provided by City staff, total estimated population associated with proposed and approved development is approximately 12,800, indicating rapid population growth in the study area. This aligns with the findings in the 'Population & Age' section above, which indicates that population growth in the study area was approximately 16% between 2006 and 2011, compared to 4.5% for the City at large.

Address	Ward	Approval Status	Proposed or Approved Unit Counts			
			Bachelor	1 Bdrm	2 Bdrm	3+ Bdrm
117 Roselawn Ave	16	Rezoning & Site Plan - Under Review	0	0	0	12
2388 Yonge St	16	Rezoning & Site Plan - Under Review	0	145	89	0
2360 Yonge St	16	Rezoning & Site Plan - Under Review	4	204	26	0
31 Helendale Ave	16	Rezoning - OMB Appeal	20	121	90	0
58 Orchard View Blvd	16	Approved	0	182	47	0
36 Eglinton Ave W	16	Rezoning - OMB Appeal	46	264	166	0
90 Eglinton Ave W	16	Rezoning - Under Review	0	172	75	0
54 Berwick Ave	22	Approved	8	126	71	20
2112 Yonge St	22	Rezoning - Under Review	0	43	30	0
17 Glebe Rd W	22	NOAC Issued Feb 2013	0	96	69	0
1955 Yonge St	22	Rezoning Approved; Site Plan Circulated	7	128	70	1
124 Belsize Dr	22	Rezoning & Site Plan - Under Review	0	0	0	6
2131 Yonge St	22	Rezoning - OMB Appeal	53	470	170	0
2221 Yonge St	22	Rezoning - Under Review	0	349	157	54
33 Holy St	22	Rezoning - Under Review	130	463	261	8
79 Dunfield Ave	22	Approved	3	399	124	45
11 Lillian St	22	Rezoning & Site Plan - Under Review	0	54	64	11
161 Eglinton Ave E	22	Site Plan - Under Review	56	257	28	0
183 Roehampton Ave	22	Rezoning Approved; Site Plan Under Review	27	301	118	0
151 Roehampton Ave	22	Rezoning & Site Plan - Under Review	60	359	98	3
95 Broadway Ave	22	Rezoning & Site Plan - Under Review	37	527	281	8
73 Keewatin Ave	22	Approved	1	50	23	6
18 Erskine Ave	25	Rezoning & Site Plan - Under Review	0	240	60	0
99 Erskine Ave	25	NOAC Issued Feb 2013	56	204	162	10
Total Proposed/Approved Units			508	5,154	2,279	184
Estimated Population per Unit Type			1.25	1.4	1.89	3.67
Population Subtotals by Unit Type			635	7,216	4,307	675
Total Estimated Population Growth (Proposed & Approved Development):						12,833

Figure 19: Estimated Population Growth

PART FOUR // FACILITIES INVENTORY

The following section provides an inventory of facilities and services in the study area. Enrollment and utilization metrics have been provided where available. A more detailed list containing additional information about some of the facilities discussed in this section has been included in Appendix B of this report, derived from information provided by the City of Toronto Research and Information division of City Planning.

Schools


There are 6 Toronto District School Board (TDSB) schools serving the study area, with two located within the study area and four outside the study area with catchment areas that include portions of the study area. Three Toronto Catholic District School Board (TCDSB) schools serve the study area with two inside the study area, and the remaining one outside with a catchment area that includes a portion of the study area.


The table on the following page details capacity, enrollment, utilization rates and available spots for both school boards. For elementary students, total capacity is significantly greater than total enrollment for both TDSB and TCDSB indicating that there is significant capacity to accommodate new elementary school students in the study area. In comparison, secondary schools in the study area are more constrained. There are two TDSB secondary schools and one TCDSB secondary school within the study area. The TDSB North Toronto Collegiate Institute and TCDSB Marshall McLuhan secondary school are both operating significantly over capacity, whereas the TDSB Northern Secondary School is operating under capacity with 35 available spots.


The planning departments for both school boards utilize pupil yield factors based on a sampling of recently constructed developments to project new school enrollment resulting from new residential development. Applying these yield factors to the proposed development yields an estimated 12 new elementary school students (11 TDSB students + 1 TCDSB student), and 24 new secondary school students (23 TDSB students + 1 TCDSB student).


Given that there is significant capacity for new elementary school students in both school boards, the introduction of the estimated 12 new elementary school students associated with the proposed development will in no way compromise the capacity of elementary schools in the area.

While total secondary school enrollment exceeds total secondary school capacity within the study area, the TDSB Northern Secondary School located less than one kilometre from the development still has more than enough capacity with 35 available spots to accommodate the estimated 24 new secondary school students associated with the proposed development.

	TDSB Secondary School	Capacity	Enrollment	Utilization Rate	Spots
1	North Toronto Collegiate Institute 17 Broadway Avenue	1,215	1,285	105.8%	0
2	Northern Secondary School 851 Mount Pleasant Road	1,839	1,804	98.2%	35
	Total	3,054	3,090	101.2%	0

	TDSB Elementary School	Capacity	Enrollment	Utilization Rate	Spots
1	Eglinton Junior Public School 223 Eglinton Avenue East	506	466	92.9%	40
2	Hodgson Senior Public School 282 Davisville Avenue	285	327	114.7%	0
3	Allenby Junior Public School 391 Saint Clements Avenue	654	690	105.5%	0
4	Davisville Junior Public School / Metro School for the Deaf/Spectrum Alternative Senior School 43 Millmoor Road	507	385	75.8%	122
	Total	1,952	1,867	95.7%	85

	TCDSB Secondary School	Capacity	Enrollment	Utilization Rate	Spots
1	Marshall McLuhan 1107 Avenue Road	969	1,068	110%	0
	Total	969	1,068	110%	0

	TCDSB Elementary School	Capacity	Enrollment	Utilization Rate	Spots
1	Saint Monica 14 Broadway Avenue	282	236	84%	46
2	Holy Rosary 308 Tweedsmuir Avenue	291	253	87%	38
	Total	573	489	85%	84

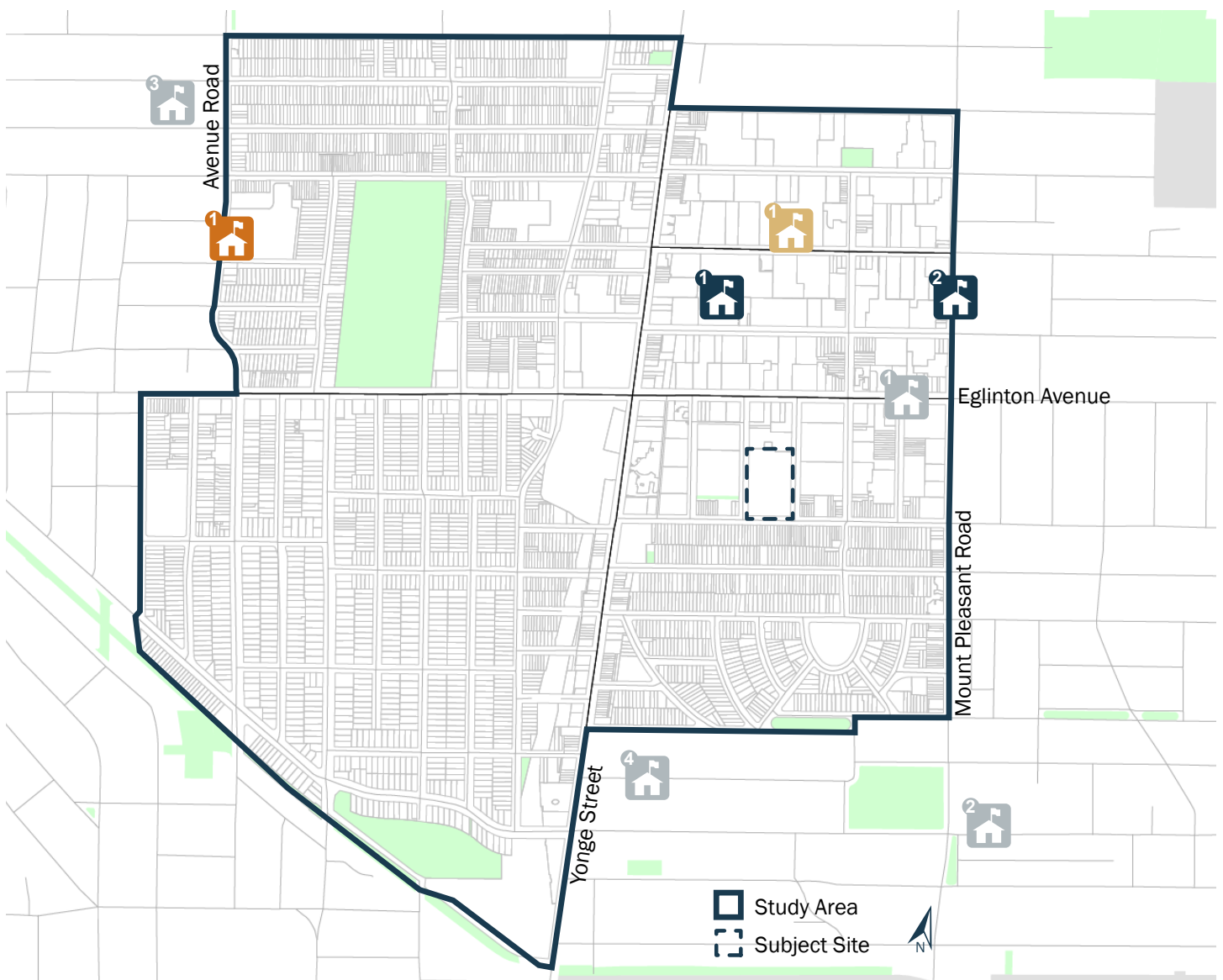


Figure 20: School Locations

Recreation Centres, Pools & Arenas

The study area is well served by the North Toronto Memorial Community Centre and adjacent North Toronto Memorial Arena.

The Community Centre is a multi-use complex that offers a wide variety of programming for all ages, including arts and crafts, visual arts, dance, children’s camps, fitness, yoga, swimming, martial arts, and numerous sports. Facilities include indoor and outdoor pools, a fitness centre, weight room, gymnasium, multi-purpose rooms, meeting space, a large lobby, and a program area for older adults.

The North Toronto Arena offers a full suite of ice-related programming, including hockey house leagues, weekly hockey learn to play sessions, Canadian Pro Hockey Clinic camps and classes, and numerous skating classes including CanSkate lessons, a full summer schedule offered by the Metro Toronto Skating Club, and programming for seniors operated by the Second Mile Orchard.



Recreation Centres, Pools & Arenas

- 1 North Toronto Memorial Community Centre
200 Eglinton Avenue West
- 2 North Toronto Arena
74 Orchard View Boulevard

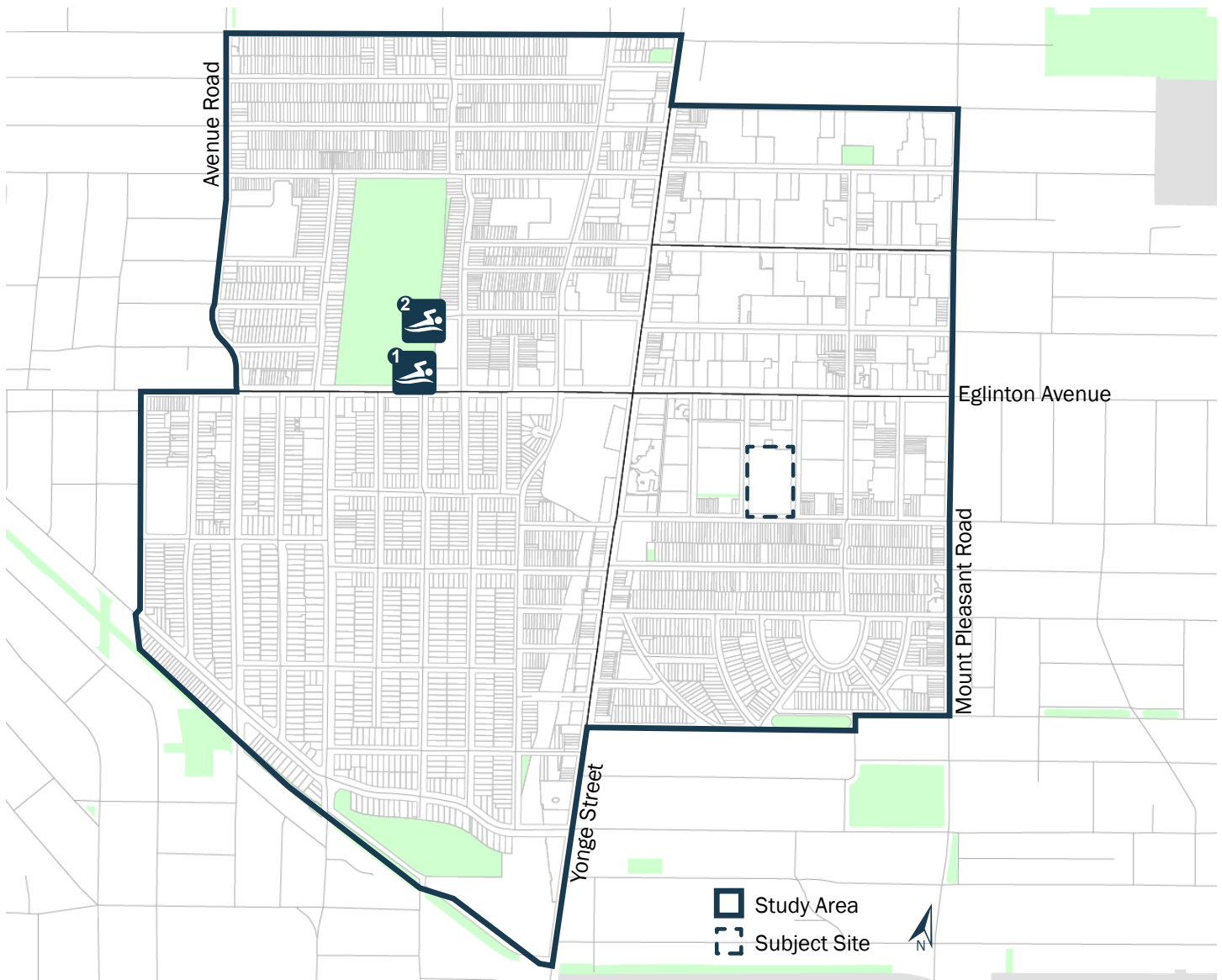
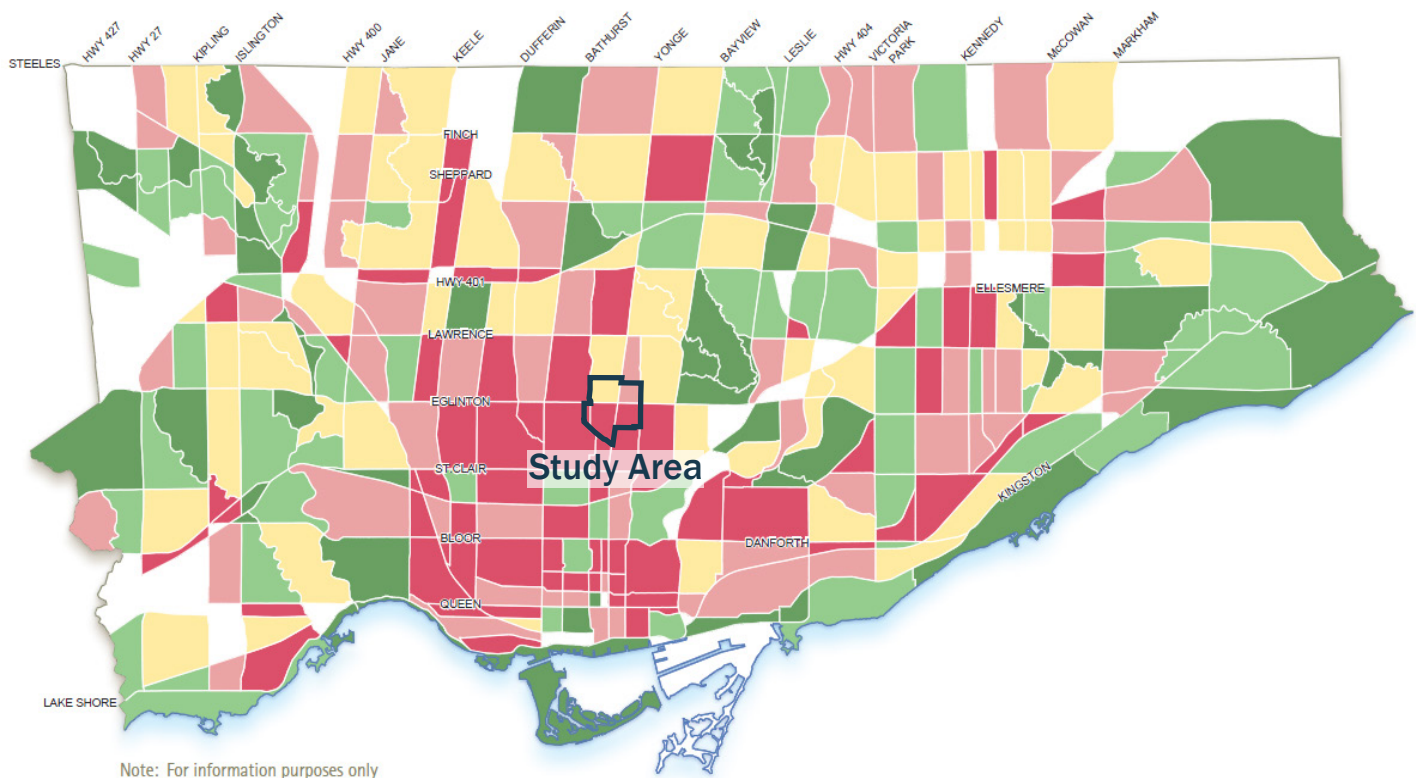


Figure 21: Recreation Centres, Pools & Arenas Locations

Parks & Open Spaces

The study area contains 10 parks ranging from parks with amenities for active uses such as playgrounds, splash pads, and baseball diamonds, to passive parks consisting of open spaces, trails, and pathways. However, the large majority of the study area falls into the lowest two quintiles of the City's Local Parkland Provision levels (pictured on the Official Plan map below), with the remainder of the study area falling into the middle quintile.

This indicates that the study area is a priority neighbourhood in terms of acquiring new parks. The table and map on the following page detail the names, locations, and types of parks that are located within the study area.



Local Parkland Provision - Map B

Hectares of local parkland
per 1,000 people

- 0 to 0.42
 ■ 0.43 to 0.79
 ■ 0.80 to 1.56
 ■ 1.57 to 2.99
 ■ 3.00 +
 □ Areas with less than 300 people

There are five colours on Map 8(B) excluding the white areas. Each of the colours covers an area that is equal to 20 percent of the geographic park planning areas of the City. The colours are used to represent the level of parkland provision in each local park planning area.

Figure 22: City of Toronto Official Plan Map 8 B - Local Parkland Provision



Parks & Open Spaces

- | | | | |
|---|---|----|---|
| 1 | Eglinton Park (District)
200 Eglinton Avenue West | 6 | Kay Gardner Belt Line Park (City Wide)
377 Mount Pleasant Road |
| 2 | Fiona Nelson Parkette
45 Imperial Street | 7 | Oriole Park (Local)
201 Oriole Parkway |
| 3 | Glebe Manor Square (Parkette)
60 Acacia Road | 8 | Redpath Avenue Parkette
130 Erskine Avenue |
| 4 | Hillsdale Avenue Parkette
32 Hillside Avenue East | 9 | Saint Clements - Yonge Parkette
14 Saint Clements Avenue |
| 5 | Holly Dunfield Walkway (Parkette)
26 Holly Street/46 Dunfield Avenue (Approximate) | 10 | June Rowlands Park (Diamond - A)
220 Davisville Avenue |

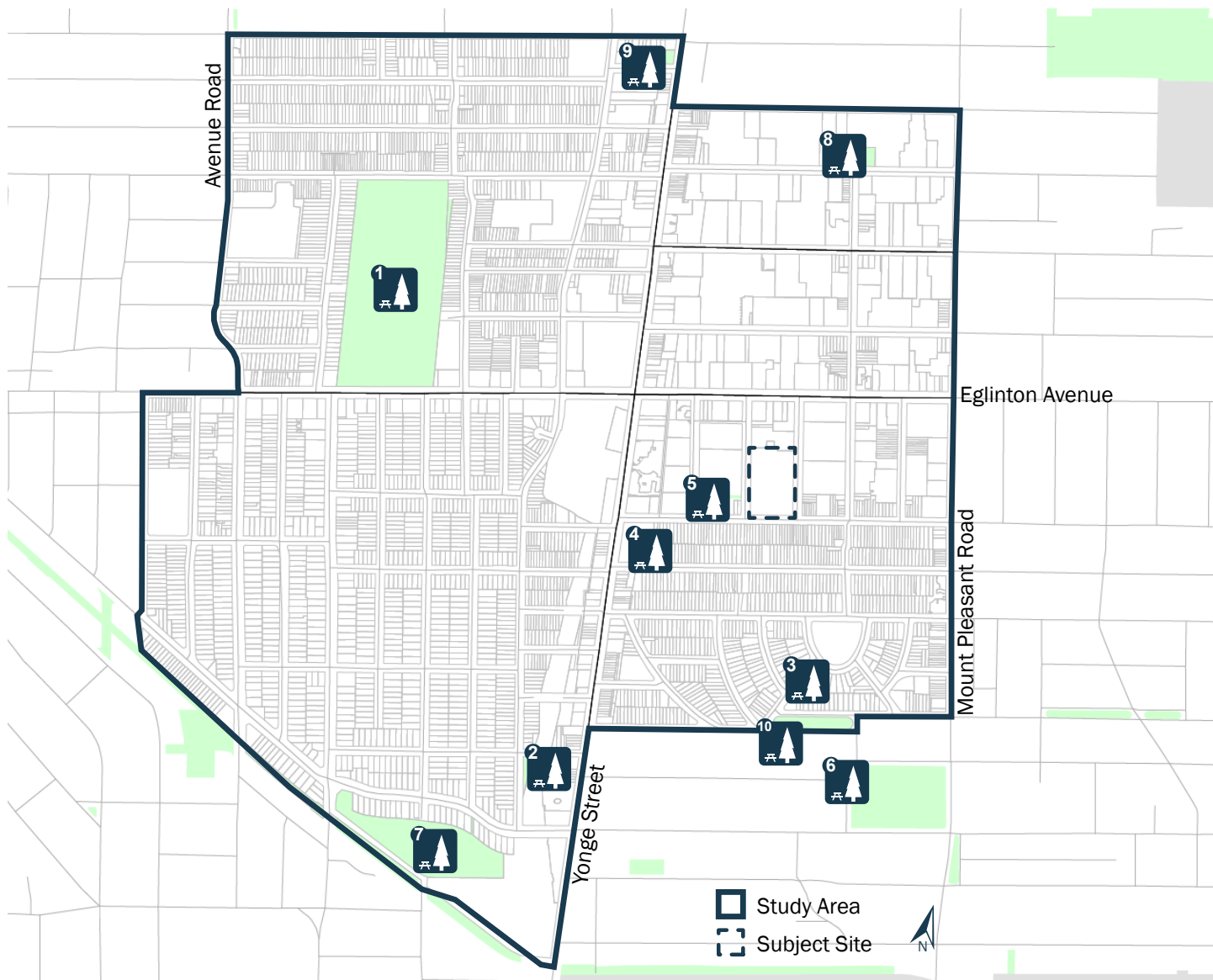


Figure 23: Parks & Open Spaces Locations

Childcare Providers

There are 12 licensed childcare providers in the study area. Only three of these providers offer services for infants, and for this reason vacancy for this age group is limited. Vacancy for toddlers is also limited but to a lesser extent, whereas for pre-schoolers and school age children there is significant vacancy. In contrast to most neighbourhoods in the City where vacancy is very limited for all age groups, the study area is reasonably well served by existing childcare providers. With that said, the area would benefit from additional childcare

service provider capacity, particularly in the infant and toddler age groups.

The following table outlines the name, location, ages served, and vacancies for each provider. The providers have been mapped on figure 24 on the following page. The map indicates that childcare providers are generally located a significant distance from the intersection of Yonge Eglinton; increasing provision of these services in closer proximity to this important intersection would be beneficial to the study area.

	 Childcare Providers	Fee Subsidy	Infant Vac	Toddler Vac	Pre School Vac	School Vac
1	Treetop Children's Centre 80 Braemar Avenue	Yes	Not offered	No Vacancy	Availability	No Vacancy
2	French Connection 40 Erskine Avenue	Yes	Not offered	Not offered	No Vacancy	No Vacancy
3	Saint Monica's Satellite (Central Eglinton) 14 Broadway Avenue	Yes	Not offered	Not offered	Availability	Availability
4	North Toronto Early Years Learning Centre 27 Castlefield Avenue	No	Not offered	No Vacancy	Availability	Availability
5	Manor Montessori School 2, 4 De Savery Crescent	No	Not offered	Availability	Availability	Availability
6	Children's Magic Moments Child Care & Nursery 98 Braemar Avenue	No	Availability	Availability	Availability	Not offered
7	Saint Clement's Early Learning School 70 Saint Clements Avenue	No	Not offered	No Vacancy	No Vacancy	No Vacancy
8	Central Eglinton Children's' Centre 223 Eglinton Avenue East	Yes	Not offered	No Vacancy	Availability	Availability
9	Manor Road Co-Operative Nursery School* 111 Manor Road East	-	Not offered	-	-	-
10	Special Moments Child Care Centre 20 Glebe Road East	No	Not offered	Availability	Availability	Availability
11	Curious Caterpillars 28 College View Avenue	No	No Vacancy	No Vacancy	No Vacancy	No Vacancy
12	Upper Yonge Village Day Car Centre 14 Saint Clements Avenue	Yes	No Vacancy	No Vacancy	No Vacancy	No Vacancy

* Could not be reached to obtain vacancy information

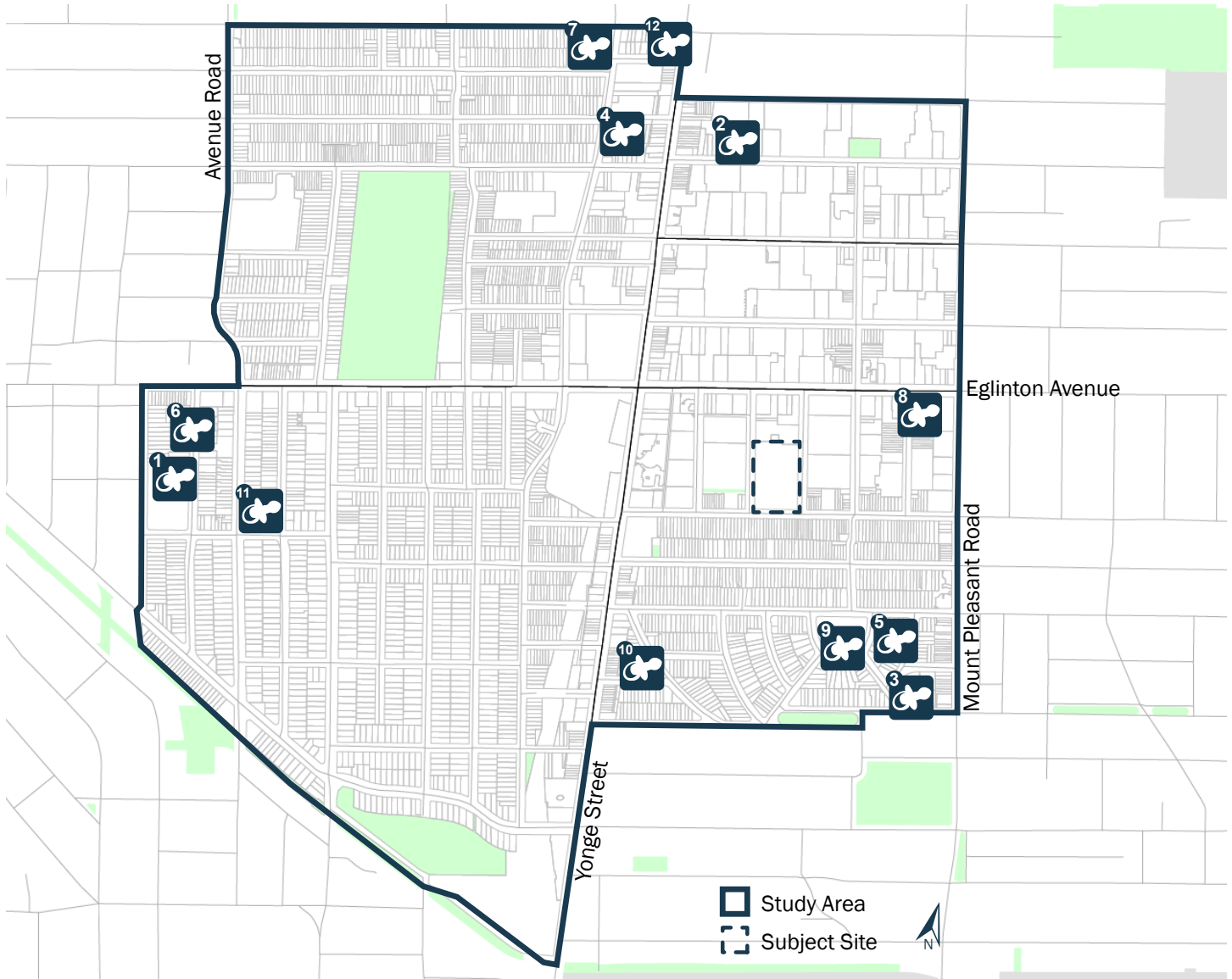



Figure 24: Childcare Providers Locations

Places of Worship

The table to the right and the map on the following page detail the address and location of places of worship within the study area.

	Places of Worship
1	Glebe Presbyterian Church 124 Belsize Drive
2	Church of the Transfiguration 111 Manor Road East
3	Glebe Road United Church 20 Glebe Road East
4	Saint Monica's Roman Catholic Church 40 Broadway Avenue
5	The Toronto Wedding Chapel 2066 Yonge Street
6	The Unity Church 173 Eglinton Avenue West
7	Kingdom Hall of Jehovah's Witness 256 Eglinton Avenue West
8	Castlefield Apostolic Church 27 Castlefield Avenue
9	Saint Clements Anglican Church 59 Briar Hill Avenue

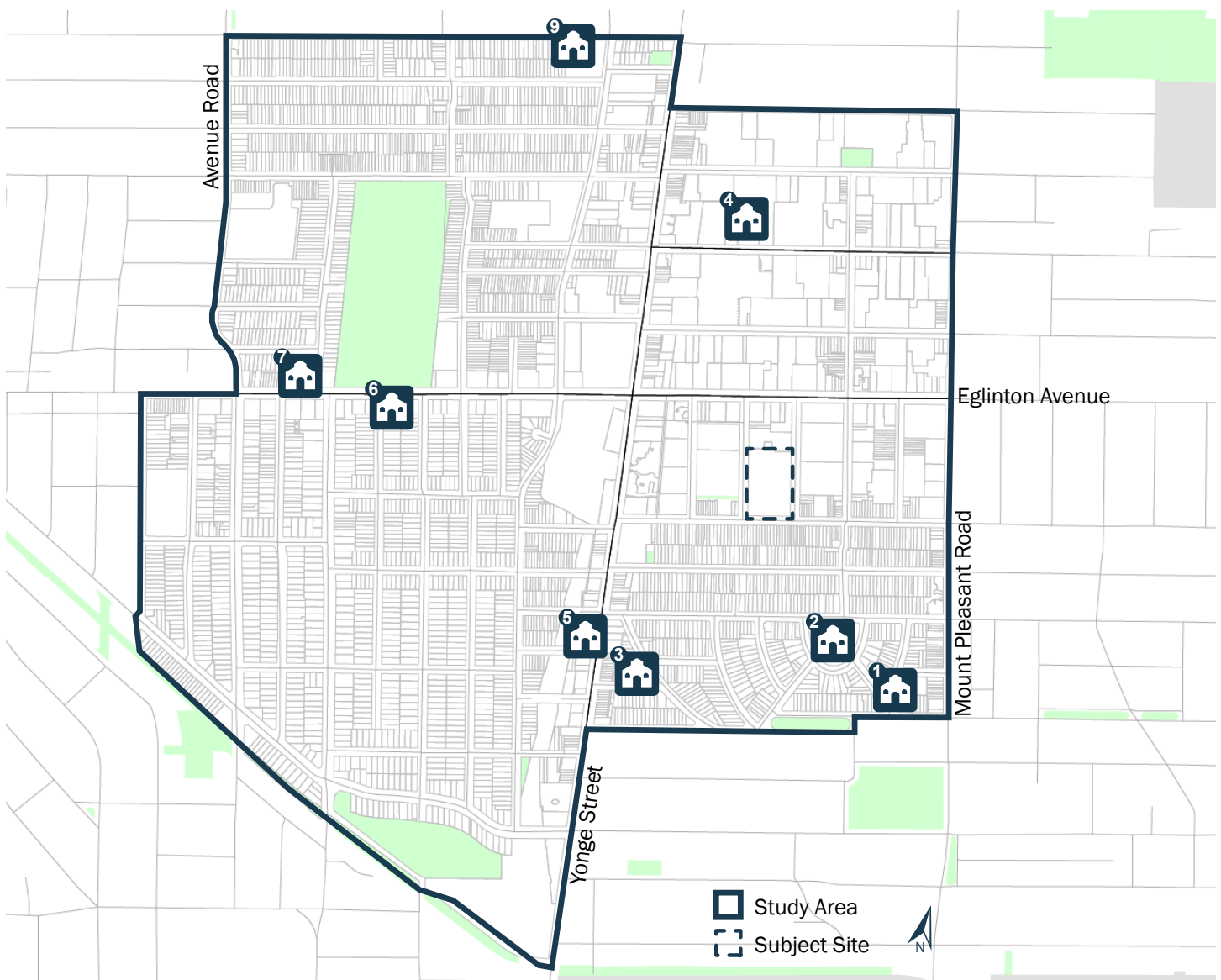


Figure 25: Places of Worship Locations

Human Services

The table on the following page details the 53 human services agencies in the study area, indicating the type of services or user subgroups in italics. These agencies are also mapped on pg. 32. The area is extensively served by these agencies, which provide counseling, health, mental health, family services, employment, recreation, social support and numerous other specialized services for individuals of all ages. Most of these agencies serve residents beyond the study area, in many cases across the entire City. As such it can be reasonably assumed that numerous agencies with addresses outside the study area are also providing services in the study area. As such, this list should not be treated as exhaustive. To identify all of the agencies that provide services to residents of the study area would require a larger study, likely City-wide, which is beyond the scope of this study.

Key service providers for different user groups and service types were identified through Internet research and through correspondence with City staff. These providers were contacted for informal interviews to identify potential spatial constraints or other barriers to the provision of human services in the study area. The key agencies contacted and related information is outlined in the table on pg. 33.

The agencies contacted noted that there is a demand for additional community facility space in the study area for all types of services and user-subgroups. This demand is primarily for flexible meeting and gathering space; some agencies also noted they would benefit from indoor recreation space. This demand generally appears to be the result of a lack of affordable space as opposed to a lack of physical space itself, though the community centred noted they are actively looking for a larger space. Agencies noted that they would benefit from space that was affordable, flexible, and located in highly accessible and visible locations (e.g. near transit, on major commercial/retail streets, etc.). As most of the groups contacted provide services well beyond the study area, it was difficult to determine if the demand for affordable, flexible community space was unique to the study area or more of a response to a general lack of space in larger areas these agencies serve. Given that these agencies already have functional facilities within the study area, agencies interested in flexible

community space would likely benefit more from new community space beyond the study area to expand their reach and ability to offer satellite services beyond their primary locations.

Demand for additional community facilities should also be considered alongside the demographic profile of the study area compared to the City at large to determine if provision of new community facilities should be a high priority within the study area.

- The CSF's demographic analysis indicates a much higher percentage of adults aged 25-39, a much lower proportion of children aged 0-19, and slightly lower proportion of seniors aged 60-84 compared to the City at large;
- There are significantly fewer families with children at home and a significantly greater proportion of single person households in the study area;
- Immigrants make up a smaller proportion of the population in the study area;
- Labour force participation and educational achievement are higher and unemployment rates are lower; and
- Both average household and average family income are significantly higher in the study area.

Given that these human service providers focus on youth, young children/families, seniors, immigrants, and/or adults that are struggling to succeed in the labour market, it should be noted that compared to the rest of the City these demographics are all underrepresented in the study area. It thus can be assumed that the demand for these services is relatively lower in the study area than in many other areas of the City. The area does not have any gaps in essential human services, given the large number and diversity of agencies located within the study area serving all user subgroups. The only identified barrier - demand for additional community facility space - appears to be the result of high property values alongside population growth and development in the study area. As such, provision of affordable, flexible community space would be a meaningful benefit. However, as agencies noted that a new facility would best be located near transit in a highly visible location, the subject site represents a somewhat marginal location given its distance from a TTC stop and less visible location in a quieter residential area.

Human Services

1 Alcoholics Anonymous (<i>health</i>) 234 Eglinton Avenue East	19 Ontario Physiotherapy Association (<i>health</i>) 55 Eglinton Avenue East	37 Midaynta Community Services (<i>immigrant</i>) 1992 Yonge Street
2 Alzheimer Society of Toronto (<i>health</i>) 20 Eglinton Avenue West	20 Right to Life Association of Toronto and Area (<i>human rights</i>) 120 Eglinton Avenue East	38 Association of Early Childhood Educators (<i>education/childcare</i>) 40 Orchard View Boulevard
3 Amnesty International (<i>human rights</i>) 1992 Yonge Street	21 POINT (<i>youth, seniors, families, immigrant</i>) 200 Eglinton Avenue West	39 AlphaPlus (<i>employment skills</i>) 161 Eglinton Avenue East
4 ADR Institute of Ontario (<i>legal</i>) 234 Eglinton Avenue East	22 Project Work (<i>disability/employment skills</i>) 2221 Yonge Street	40 Toronto Transit Commission 1900 Yonge Street
5 Big Brothers Big Sisters of Toronto (<i>youth</i>) 2345 Yonge Street	23 Toronto Catholic District School Board (<i>education</i>) 90 Eglinton Avenue East	41 Adoption Council of Ontario (<i>families</i>) 36 Eglinton Avenue West
6 Addus (<i>health</i>) 40 Orchard View Boulevard	24 VR Placement (<i>disability/employment skills</i>) 2221 Yonge Street	42 Anne Johnston Health Station (<i>health</i>) 2398 Yonge Street
7 Easter Seals Canada (<i>youth</i>) 40 Holly Street	25 VHA Home HealthCare (<i>health</i>) 30 Soudan Avenue	43 Toronto Employment and Social Services (<i>employment</i>) 150 Eglinton Avenue East
8 Central Eglinton Community Centre (<i>youth, seniors, families/kids</i>) 160 Eglinton Avenue East	26 VOICE for Hearing Impaired Children (<i>health</i>) 161 Eglinton Avenue East	44 Ontario Network for Prevention of Elder Abuse (<i>seniors</i>) 234 Eglinton Avenue East
9 YMCA of Greater Toronto (<i>youth, seniors, families</i>) 2200 Yonge Street	27 Working Skills Centre (<i>employment skills</i>) 55 Eglinton Avenue East	45 Centre for Comm. Learning & Development (<i>employment skills</i>) 110 Eglinton Avenue West
10 Delisle Youth Services (<i>youth</i>) 40 Orchard View Boulevard	28 Independent Learning Centre (<i>education</i>) 2180 Yonge Street	46 Cystic Fibrosis Canada (<i>health</i>) 2221 Yonge Street
11 Dying with Dignity Canada (<i>seniors</i>) 55 Eglinton Avenue East	29 Ontario Energy Board 2300 Yonge Street	47 Fairlawn Medical Centre (<i>health</i>) 2401 Yonge Street
12 Mood Disorders Association of Ontario (<i>health</i>) 36 Eglinton Avenue East	30 Working Skills Centre (<i>employment skills</i>) 55 Eglinton Avenue East	48 Out of the Cold. Meal Programs (<i>poverty/food security</i>) 59 Briar Hill Avenue
13 Heart and Stroke Foundation of Ontario (<i>health</i>) 2300 Yonge Street	31 Camp Awakening (<i>youth</i>) 150 Eglinton Avenue East	49 Walk-in Medical Clinic, Yonge/Davisville (<i>health</i>) 1910 Yonge Street
14 Integra (<i>families/kids</i>) 25 Imperial Street	32 Second Mile Club of Toronto (<i>seniors</i>) 174 Orchard View Boulevard	50 Raising the Roof (<i>poverty/housing</i>) 263 Eglinton Avenue West
15 AIESEC Canada (<i>youth</i>) 161 Eglinton Avenue East	33 Horizons for Youth (<i>youth</i>) 411 Duplex Avenue East	51 College of Psychologists of Ontario (<i>health</i>) 110 Eglinton Avenue West
16 Muscular Dystrophy Canada (<i>health</i>) 2345 Yonge Street	34 Academy of Computer and Employment Skills (<i>employment skills</i>) 55 Eglinton Avenue East	52 Certified General Accountants of Ontario 240 Eglinton Avenue East
17 Canadian Tire Jumpstart (<i>families/kids</i>) 2180 Yonge Street	35 Toronto Community Employment Services (<i>employment skills</i>) 2221 Yonge Street East	53 Link Up Employment Services for Persons with Disabilities (<i>employment</i>) 55 Eglinton Avenue East
18 ON Council of Agencies Serving Immigrants (<i>immigrants</i>) 110 Eglinton Avenue West	36 Whyy Mee Family Counseling Foundation (<i>families</i>) 59 Briar Hill Avenue	

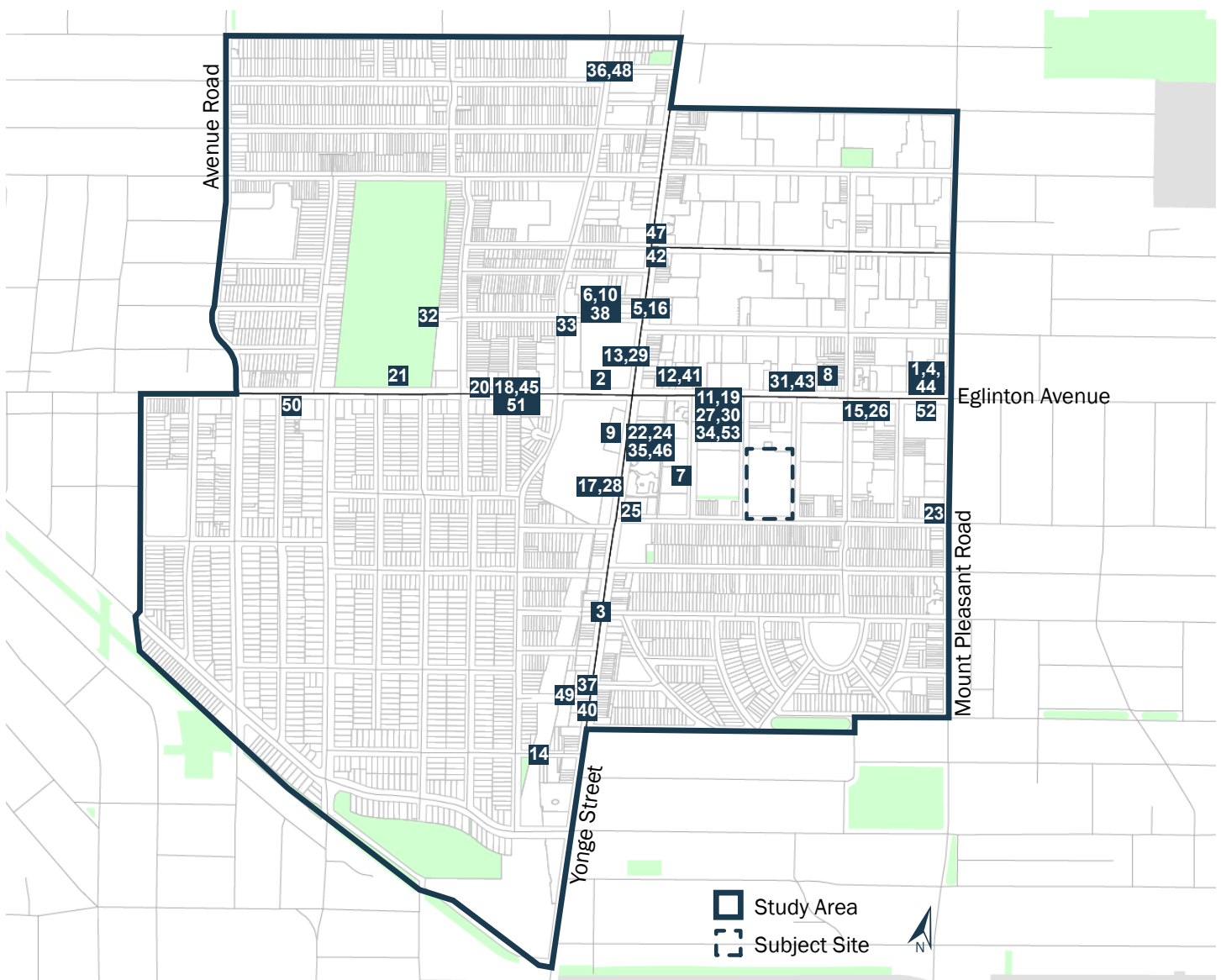


Figure 26: Human Services Locations

Key Human Service Provider Interview Notes

Agency	Type of Service	Address	Phone #	Person contacted	Demand for Space	Notes
Big Brothers Big Sisters	Youth	2345 Yonge St	416-925-8981	Mary Catell x4109	Yes	Uses various spaces in the community for some programs (arrangements with TDSB to run programs at lunch or after school and rents other facilities such as united way hubs. Would love to see new spaces in the community. Need meeting room space, also space for larger group meetings and physical activity (gym type space).
Delisle Youth Services	Youth	40 Orchard View Blvd	416-482-0081	Marc Campbell	Yes	Some programs are offered in spaces in the community. Offers a drop in centre out of the Library, this space is not affordable (charged full rent); also offers services city wide. Lack of affordable space in the area is a barrier to providing services. Real need is for accessible/visible space - near youth, central, close to transit, visible and easy to find (e.g. storefront space).
Central Eglinton Community Centre	Youth, Seniors, Health, Families/ kids	160 Eglinton Ave E	416-392-0511	Nancy Lyon x225	Yes	Current space is inadequate - looking for a new home or additional space, as it is increasingly difficult to reach out to new residents. Used to run additional programming out of schools and salvation army basement (stopped when school started charging - affordability is an issue). Would definitely make use of a flexible space - most important would be a gym/multi purpose room for indoor physical activity.
Alcoholics Anonymous	Health	234 Eglinton Ave E	416-487-5591	Gail	Unsure	This office manages the business side of the organization; various individuals take the initiative to set up meetings at different locations. Gail believed there are a couple of groups operating in or near the study area, and was not able to comment on the need for additional space in the study area.
POINT	Youth, Seniors, Health, Families/ kids, Immigrants	200 Eglinton Ave W	416-487-2390	Dianne Warner	Yes	Offers programming out of their office and also at various locations in the community (e.g. diabetes programming, various workshops subject to funding, all candidates meetings etc.). Will also share their space with other organizations. Existing space is not adequate - too small. Also of note, operates out of community centre rent free; can't afford to move. Would love to share a satellite location perhaps shared with another organization, or to have access to other flexible spaces in the community to offer programming.
Anne Johnston Health Station	Health (Youth, Seniors, Disability)	2398 Yonge St	416-486-8666	Lindsay x266	No (but indicated that demand exists in community)	While their space is adequate for their programming, majority of which is run on site (aside from primary care services), does feel there is a shortage of flexible community space in the area. Will occasionally take diabetes programming or other special programs to satellite locations (e.g. through TCH, but very challenging to coordinate this), or try to partner with other agencies for offsite programming, but again this is challenging as other agencies are tight for space. Affordability of space is a key concern. Space should be close to subway/bus and fully accessible.
Working Skills Centre	Immigrant Services/ Employment Skills	55 Eglinton Ave E	416-703-7770	Honey Crossley x516		Could not be reached for comment at time of writing.
The Second Mile	Seniors	174 Orchard View	416-481-4416	Karen		Could not be reached for comment at time of writing.

Libraries

There is one library within the study area, the Northern District Library. The Northern District Library is a district branch, which through the Toronto Public Library service delivery model is intended to provide extensive recreation and informational collections for the surrounding district. The library includes seating for 222 plus 26 in a quiet study/program room which is available when library programs are not in session. Other features include an Art Exhibit Space, two meeting rooms, a kitchen, a Book Discussion Group, Pedometer Lending, a Computer Learning Centre with 10 computers, a bank of 25 Internet/Microsoft Office workstations, and a Teen Zone.



Libraries

- 1 Northern District Library
40 Orchard View Boulevard

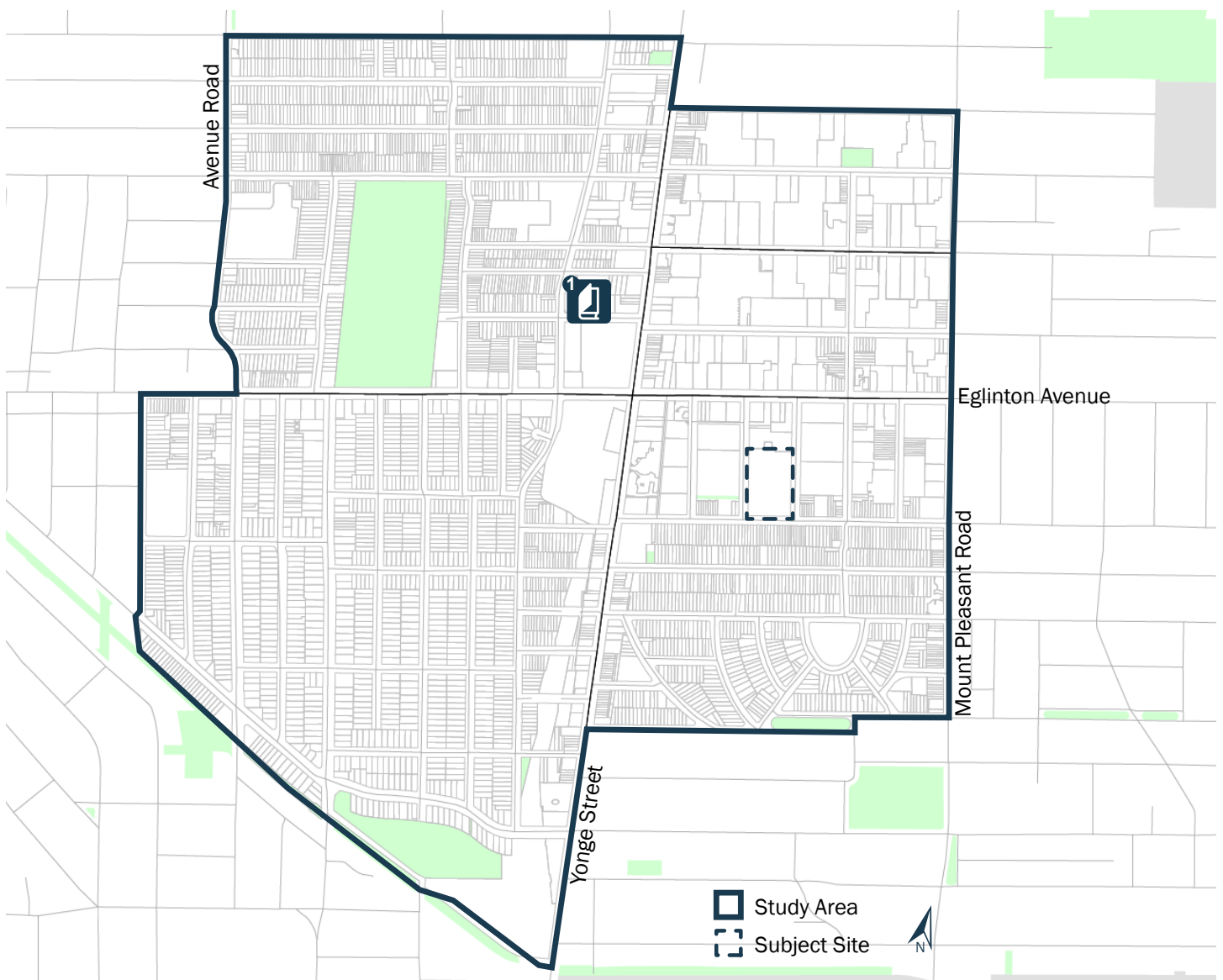


Figure 27: Library Locations

PART FIVE // CONCLUSIONS

The purpose of this study has been to evaluate the impact of the proposed development on community services and facilities in the surrounding study area. An analysis of 2011 Census and National Household data was conducted to present a demographic profile of the study area. The following are significant findings from the analysis:

- The study area's population has been growing nearly four times faster than the City at large (16.8% vs 4.5%);
- The study area contains a much higher proportion of adults aged 25-39 and a much smaller proportion of children aged 0-19 than the rest of the City;
- There are significantly fewer families with children at home and a significantly greater proportion of single person households than the City at large;
- A much greater proportion of the population lives in apartment buildings (both 5 storeys and up and under 5 storeys) than the rest of the City;
- Immigrants make up a smaller proportion of the population and English is more commonly spoken at home in the study area compared to the City at large;
- In the study area, labour force participation and educational achievement are higher than the rest of the city, and unemployment rates are lower;
- Both average household and average family income are significantly higher in the study area than the City at large.

A higher proportion of adults and fewer children at home together would seem to indicate that the study area has a relatively lower demand for school facilities, childcare providers, and other youth-centred services and facilities compared to the rest of the City. Higher educational achievement, labour force participation, and average income indicate a relatively reduced demand for a number of types of human services as well. This is further supported by the fact that the study area has a lower proportion of immigrants. With a growing population and a larger proportion of the population living in apartment buildings in the study area, there is a high demand for the provision of parks and open spaces.

The inventory of services shows that the study area is fairly well served by existing recreational facilities, places of worship, and the Northern District Library.

There are 12 licensed childcare providers in the area. While there is limited capacity for infants and to a lesser extent toddlers, the study area appears to be adequately served by these existing facilities. When compared to other neighbourhoods across the City where demand is significantly higher and extremely limited capacity is the norm, the study area is fairing relatively well in this regard. With this said, the area would benefit from increased provision of childcare services, particularly for infants and toddlers. Also of note, existing providers are generally located towards the edges of the study area, further from the important Yonge & Eglinton intersection. Accordingly, the proposed development includes a daycare facility of 510sm for infants, toddlers and preschoolers.

Keeping in mind that the demographic profile for the area indicates reduced demand for many human services, the study area is extremely well served by the 53 human service organizations operating within the study area, offering diverse services for all user subgroups. This study did reveal that there is a demand for additional community facility space for human service providers in the area; primarily flexible meeting and gathering space. Affordability as opposed to a lack of physical space appears to be the primary barrier. While a flexible community facility would be an appropriate community benefit to address this finding, the key agencies that were interviewed indicated that a new facility would best be located near transit in a highly visible location. The proposed development attempts to address certain aspects of this need by providing 120sm of flexible indoor community space.

In regards to educational services, there is sufficient capacity in both the TDSB and TCDSB to accommodate new elementary school students. Secondary schools in the study area are more constrained. There are two TDSB secondary schools and one TCDSB secondary school within the study area. The TDSB North Toronto Collegiate Institute and TCDSB Marshall McLuhan secondary school are both operating significantly over capacity, whereas the TDSB Northern Secondary School is operating under capacity with 35 available spots. Applying pupil yield factors to the proposed development yields an estimated 24 new secondary school students.

While total secondary school enrollment exceeds total secondary school capacity within the study area, the TDSB Northern Secondary School located less than one kilometre from the development still has more than enough capacity to accommodate the estimated increase in secondary school enrollment associated with the proposed development. Furthermore, the demographic profile indicates that there is a high capacity for families in the study area to find alternatives to constrained public secondary schools, given higher average income and numerous private schools serving the study area.

Finally, the inventory of services revealed that the large majority of the study area falls into the lowest two quintiles of the City's Local Parkland Provision levels, indicating that the provision of new parks in the area is a priority. Despite the existence of 10 parks in the study area ranging from parkettes to much larger parks with both active and passive uses, the high rate of growth and high proportion of the population living in multi-storey apartment buildings further supports the need for new parks and open spaces. The proposed development seeks to address this need by supplementing the existing publicly accessible open space on the subject site, particularly adjacent to the existing parkette in the southwest corner of the site. This creates a larger green open space for community use.

APPENDIX A // DETAILED STATISTICS

2011 Census Data

Demographic Variable	Yonge Eglinton		Toronto	
	#	%	#	%
Population				
Total 2006 Population	25,668		2,503,281	
Total 2011 Population	29,991		2,615,060	
2006-2011 Change		16.8%	111,779	4.5%
Age				
Total Population by Age Group	29,995		2,615,050	
0-4	1,190	4.0%	140,510	5.4%
5-9	900	3.0%	128,065	4.9%
10-14	800	2.7%	132,290	5.1%
15-19	980	3.3%	150,040	5.7%
20-24	2,055	6.9%	183,470	7.0%
25-29	4,485	15.0%	211,850	8.1%
30-34	3,885	13.0%	201,165	7.7%
35-39	2,765	9.2%	190,405	7.3%
40-44	2,260	7.5%	197,400	7.5%
45-49	2,080	6.9%	207,625	7.9%
50-54	1,705	5.7%	191,295	7.3%
55-59	1,695	5.7%	162,535	6.2%
60-64	1,515	5.1%	140,960	5.4%
65-69	1,120	3.7%	102,445	3.9%
70-74	780	2.6%	86,185	3.3%
75-79	620	2.1%	74,215	2.8%
80-84	515	1.7%	59,630	2.3%
85+	635	2.1%	54,965	2.1%
Families				
Total number of families in private households	6,925		690,335	
Without children	3,585	51.8%	231,590	33.5%
With children	3,330	48.1%	458,745	66.5%
Total Couple families by family structure	5,890	85.1%	543,355	78.7%
Total married couples	4,360	74.0%	473,445	87.1%
Total common-law couples	1,530	26.0%	69,910	12.9%
Total couple families by family structure	5,890	85.1%	543,355	78.7%
Total couples without children at home	3,585	60.9%	231,595	42.6%
Total couples with children at home	2,290	38.9%	311,760	57.4%
1 child	1,140	49.8%	129,850	41.7%
2 children	945	41.3%	129,445	41.5%
3 or more children	220	9.6%	52,465	16.8%
Total lone-parent families by number of children at home	1,040	15.0%	146,985	21.3%
1 child	725	69.7%	89,600	61.0%
2 children	280	26.9%	40,310	27.4%
3 or more children	45	4.3%	17,075	11.6%

Demographic Variable	Yonge Eglinton		Toronto	
	#	%	#	%
Breakdown of children at home by age group (20% sample data)				
	5,130		792,760	
Under 6 years of age	1,390	27.1%	165,825	20.9%
6 - 14 years	1,470	28.7%	231,955	29.3%
15 - 17 years	530	10.3%	84,815	10.7%
18 - 24 years	1,130	22.0%	168,280	21.2%
25 years and over	600	11.7%	141,885	17.9%
Average number of children at home per census family	0.7		1.1	
Total number of persons 65 years and over (20% sample data)				
	3,470		354,620	
Number of non-family persons 65 years and over	1,920	55.3%	128,935	36.4%
Living with relatives	100	5.2%	25,450	19.7%
Living with non-relatives only	50	2.6%	8,280	6.4%
Living alone	1,775	92.4%	95,205	73.8%
Number of family persons 65 years and over	1,550	44.7%	225,685	63.6%
Households				
Total no. of private households by household size	17,200		1,047,885	
1 person	9,225	53.6%	331,180	31.6%
2 persons	5,125	29.8%	307,845	29.4%
3 persons	1,540	9.0%	168,750	16.1%
4 - 5 persons	1,255	7.3%	201,765	19.3%
6 or more persons	55	0.3%	38,345	3.7%
Number of persons in private households	29,740		2,576,025	
Average number of persons in private households	1.7		2.5	
Total number of private households by household type ¹	17,200		1,047,880	
Single-family households	6,585	38.3%	625,820	59.7%
Multiple-family households	45	0.3%	31,140	3.0%
Non-family households	10,325	60.0%	390,920	37.3%
¹ "Non-Family" refers to either one person living alone in a private dwelling or to a group of two or more people who share a private dwelling, but do not constitute a Census family. "Single-Family" refers to One-Family Only households, including Couple Family households and One-Family households with persons not in a Census family. "Multiple-Family" refers to Two or more Family households.				
Total no. of persons in private households	29,745		2,576,025	
Number of non-family persons	11,805	39.7%	549,575	21.3%
Number of family persons	17,940	60.3%	2,026,450	78.7%
Average number of persons per census family	2.6		2.9	
Housing				
Total no. of occupied private dwellings by structural type	17,200		1,047,875	
Single-detached house	1,815	10.6%	275,015	26.2%
Semi-detached house	660	3.8%	72,400	6.9%
Row house	120	0.7%	60,295	5.8%
Apartment, detached duplex	415	2.4%	44,740	4.3%
Apartment building, five or more storeys	10,990	63.9%	429,225	41.0%
Apartment building, less than five storeys	3,170	18.4%	163,895	15.6%
Other single attached house	15	0.1%	2,195	0.2%
Movable dwelling	15	0.1%	110	0.0%
Top 5 Home Languages				
Number of Single Responses	28,785		2,406,525	
#1	English	85.5%	English	68.9%
#2	Persian (Farsi)	1.7%	Cantonese	2.8%
#3	Spanish	1.6%	*Chinese, n.o.s.	2.6%
#4	Korean	1.5%	Mandarin	2.1%
#5	Russian	1.1%	Tamil	2.0%

*n.o.s. = not otherwise specified - Chinese dialects include Hakka, Fukien, Shanghainese, Taiwanese, dialects not otherwise specified, as well as responses of "Chinese" that do not specify a dialect.

Source: Statistics Canada, 2011 Census of Canada

Demographic Variable	Yonge Eglinton		Toronto	
	#	%	#	%

2011 National Household Survey Data				
Housing				
Total no. of occupied private dwellings by period of construction	17,205		1,047,875	
1960 or before	5,555	32.3%	377,575	36.0%
1961 to 1980	5,900	34.3%	344,165	32.8%
1981 to 1990	1,735	10.1%	122,910	11.7%
1991 to 2000	1,100	6.4%	77,925	7.4%
2001 to 2005	460	2.7%	61,570	5.9%
2006 to 2011	2,440	14.2%	63,730	6.1%
Total number of occupied private dwellings by tenure	17,195		1,047,880	
Owned	5,145	29.9%	571,790	54.6%
Rented	12,050	70.0%	476,090	45.4%
Immigrants				
Total Population by Immigrant status	29,740		2,576,030	
Non-immigrant population	18,700	62.9%	1,258,870	48.9%
Immigrant population	9,850	33.1%	1,252,215	48.6%
Non-permanent residents	1,175	4.0%	64,945	2.5%
Top 5 immigrant groups by region of birth	29,735		1,252,210	
1st	United Kingdom	2.9%	China	10.6%
2nd	Other Places of Birth in Europe	2.2%	Philippines	8.2%
3rd	Philippines	2.2%	India	6.3%
4th	Iran	2.1%	Sri Lanka	4.7%
5th	China	1.9%	Italy	4.3%
Top 5 recent immigrant groups by region of birth	2,290		216,525	
1st	Iran	10.7%	Philippines	14.5%
2nd	China	7.4%	China	13.4%
3rd	Philippines	7.2%	India	9.8%
4th	Other Places of Birth in Europe	6.8%	Iran	4.5%
5th	Russian Federation	6.1%	Sri Lanka	4.4%
Total immigrant population by period of immigration	9,850		1,252,215	
Before 1971	1,510	15.3%	190,000	15.2%
1971 to 1980	1,030	10.5%	150,585	12.0%
1981 to 1990	1,385	14.1%	185,680	14.8%
1991 to 2000	2,005	20.4%	314,470	25.1%
2001 to 2011	3,930	39.9%	411,480	32.9%
Total population 15 years and over by generation status	29,745		2,576,025	
1st generation	11,245	37.8%	1,324,850	51.4%
2nd generation	7,970	26.8%	696,380	27.0%
3rd generation and over	10,515	35.4%	554,795	21.5%

Demographic Variable	Yonge Eglinton		Toronto	
	#	%	#	%
Education				
Total population aged 25 to 64 years by highest certificate, diploma or degree	26,840		1,491,885	
No certificate, diploma or degree	1,620	6.0%	158,285	10.6
High school diploma or equivalent	4,030	15.0%	306,005	20.5
Postsecondary certificate, diploma or degree	21,175	78.9%	1,027,595	68.9
Apprenticeship or trades certificate or diploma	855	3.2%	77,465	5.2
College, CEGEP or other non-university certificate or diploma	4,370	16.3%	260,810	17.5
University certificate or diploma below bachelor level	1,435	5.3%	87,620	5.9
University certificate, diploma or degree at bachelor level or above	14,510	54.1%	601,700	40.3
Bachelor's degree	8,650	32.2%	362,580	24.3
University certificate, diploma or degree above bachelor level	5,868	21.9%	239,120	16.0
Mobility				
Total by mobility status 5 years ago	28,490		2,435,670	
Non-movers	11,185	39.3%	1,415,355	58.1%
Movers	17,310	60.8%	1,020,315	41.9%
Non-migrants	9,525	33.4%	644,555	26.5%
Migrants	7,785	27.3%	375,760	15.4%
Internal migrants	4,735	16.6%	175,180	7.2%
Intraprovincial migrants	3,665	12.9%	139,635	5.7%
Interprovincial migrants	1,080	3.8%	35,545	1.5%
External migrants	3,030	10.6%	200,580	8.2%
Income²				
Total Economic Families	7,065		675,895	
Average 2010 Family income	\$139,897		\$105,526	
Total private households	17,200		1,047,875	
Average 2010 household income	\$96,010		\$87,038	
Total population in private households	29,735		2,576,030	
Prevalence of low income in 2010 based on after-tax low income measure %		15.5%		19.3%
Total households (30%+ of Hhld income on shelter costs)	6,305		363,465	
Tenant households (30%+ of Hhld income on shelter costs)		42.3%		43.5%
Owner households (30%+ of Hhld income on shelter costs)		23.8%		27.6%
Total number of dwellings	17,205		1,047,875	
² Average income data should be treated as estimated within the study area. These numbers are calculated from aggregate data.				
Labour Force				
Total population 15 years and over by labour force activity	26,845		2,175,830	
In the labour force	19,990		1,399,985	
Employed	18,595		1,269,150	
Unemployed	1,385		130,835	
Not in the labour force	6,850		775,845	
Participation rate		74.5%		64.3%
Employment-population ratio		69.3%		58.3%
Unemployment rate		5.2%		9.3%

Demographic Variable	Yonge Eglinton		Toronto	
	#	%	#	%
Occupations³				
All occupations	19,605		1,349,190	
Management occupations	3,015	15.4%	153,440	11.4%
Business, finance and administration occupations	4,670	23.8%	256,410	19.0%
Natural and applied sciences and related occupations	2,135	10.9%	111,835	8.3%
Health occupations	1,115	5.7%	72,980	5.4%
Occupations in social science, education, government service and religion	3,150	16.1%	174,850	13.0%
Occupations in art, culture, recreation and sport	1,345	6.9%	72,110	5.3%
Sales and service occupations	3,360	17.1%	315,905	23.4%
Trades, transport and equipment operators and related occupations	620	3.2%	121,260	9.0%
Occupations unique to primary industry	-	0.0%	7,235	0.5%
Occupations unique to processing, manufacturing and utilities	150	0.8%	63,165	4.7%

³ National Occupational Classification 2011

Industries⁴				
All industries	19,620		1,349,195	
11 Agriculture, forestry, fishing and hunting	-	0.0%	1,935	0.1%
21 Mining and oil and gas extraction	-	0.0%	2,360	0.2%
22 Utilities	150	0.8%	7,260	0.5%
23 Construction	595	3.0%	64,910	4.8%
31-33 Manufacturing	550	2.8%	109,465	8.1%
41 Wholesale trade	820	4.2%	57,710	4.3%
44-45 Retail trade	1,430	7.3%	133,240	9.9%
48-49 Transportation and warehousing	285	1.5%	51,345	3.8%
51 Information and cultural industries	1,295	6.6%	62,860	4.7%
52 Finance and insurance	2,350	12.0%	112,415	8.3%
53 Real estate and rental and leasing	665	3.4%	35,215	2.6%
54 Professional, scientific and technical services	3,785	19.3%	155,435	11.5%
55 Management of companies and enterprises	-	0.0%	1,975	0.1%
56 Administrative and support, waste management and remediation services	680	3.5%	72,625	5.4%
61 Educational services	1,605	8.2%	100,865	7.5%
62 Health care and social assistance	1,975	10.1%	131,520	9.7%
71 Arts, entertainment and recreation	455	2.3%	32,250	2.4%
72 Accommodation and food services	1,050	5.4%	88,295	6.5%
81 Other services (except public administration)	845	4.3%	67,375	5.0%
91 Public administration	1,020	5.2%	60,140	4.5%

⁴ North American Industry Classification System 2007

APPENDIX B // DETAILED LIST OF FACILITIES

Yonge Eglinton Study Area, List of Community Services and Facilities, November 2013

Park Name	Address	Class	
EGLINTON PARK	200 EGLINTON AV W	District	
FIONA NELSON PARKETTE	45 IMPERIAL ST	Parkette	
GLEBE MANOR SQUARE	60 ACACIA RD	Parkette	
HILLSDALE AVENUE PARKETTE	32 HILLSDALE AVE E	Parkette	
HOLLY DUNFIELD WALKWAY		Parkette	
KAY GARDNER BELT LINE PARK	377 MOUNT PLEASANT RD	City Wide	
KAY GARDNER BELT LINE PARK	377 MOUNT PLEASANT RD	City Wide	
ORIOLE PARK	201 ORIOLE PKWY	Local	
REDPATH AVENUE PARKETTE	130 ERSKINE AV	Local	
ST. CLEMENTS - YONGE PARKETTE	14 ST CLEMENTS AV	Parkette	
Fire Stations	Address	Phone Number	
Toronto 28	16 Montgomery Ave	338-9134	
Police Stations	Address	Phone Number	
53 Division	75 Eglinton Av W	808-5300	
Child Care Centres	Address	Information	Phone Number
Treetop Children's Centre	80 Braemar Ave	2 years 6 months to 10 years	416-484-8702
French Connection	40 Erskine Ave	4 years to 10 years	416-485-1678
St. Monica's Satellite (Central Eglinton)	14 Broadway Ave	4 years to 12 years	416-440-0383
Mother Nature Day Care	124 Belsize Dr	2 years 6 months to 6 years	416-487-7345
North Toronto Early Years Learning Centre	27 Castlefield Ave	1 year 6 months to 6 years	416-484-9597
Manor Montessori School 2	14 De Savery Cres	2 years 6 months to 6 years	416-488-7370
Children's Magic Moments Child Care And Nursery School	98 Braemar Ave	0 to 6 years	416-488-0114
St. Clement's Early Learning School	70 St Clements Ave	2 years 6 months to 4 years	416-489-0822
Central Eglinton Childrens' Centre	223 Eglinton Ave E	2 years 6 months to 12 years 8 months	416-440-0383
Manor Road Co-Operative Nursery School	111 Manor Rd E	2 years 5 months to 6 years	416-489-9554
Special Moments Child Care Centre	20 Glebe Rd E	2 years 6 months to 6 years	416-482-2675
Curious Caterpillars	28 College View Ave	0 to 4 years	(647) 344-8681
Upper Yonge Village Day Care Centre	14 St Clements Ave	0 to 6 years	416-487-2861
Libraries	Address		
Northern District	40 Orchard View Blvd.		
Arenas	Address		
NORTH TORONTO MEMORIAL ARENA	174 ORCHARD VIEW BLVD		
Community Centres	Address	Location	
NORTH TORONTO MEMORIAL CRC	200EGLINTON AV W	EGLINTON PARK	
Indoor Pools	Address	Location	

North Toronto Memorial Indoor	200 Eglinton Ave West	North Toronto Memorial Community Ce	
Outdoor Pools	Address	Location	
North Toronto Memorial Outdoor Poo	200 Eglinton Ave Wes	Eglinton Park	
Catholic Elementary Schools	Address	Enrolment	Phone Number
St. Monica	14 Broadway Ave.	Enrol - 333	393-5224
Catholic Secondary Schools	Address	Enrolment	Phone Number
Marshall McLuhan	1107 Avenue Rd	Enrol - 235	222-8282 ext. 2512
Public Elementary Schools	Address		
Eglinton Jr PS / Spectrum Alternative School Sr John Fisher Jr PS Oriole Park Jr PS	223 Eglinton Avenue East 40 Erskine Avenue 80 Braemar Avenue		
Public Secondary Schools	Address		
North Toronto CI	70 Roehampton Road		
Places of Worship	Address	Contact Name	Phone Number
GLEBE PRESBYTERIAN CHURCH	124 BELSIZE DR	ROBERT ELLIOT	416-485-1881
CHURCH OF THE TRANSFIGURATIO	111 MANOR RD E	SARA DEMOOR	416-489-7798
GLEBE ROAD UNITED CHURCH	20 GLEBE RD E	MARY JANE	416-489-3172
ST MONICAS ROMAN CATHOLIC CH	40 BROADWAY AVE	FATHER JOESPH KELLY	416-483-1513
THE TORONTO WEDDING CHAPEL	2066 YONGE ST	KATHERINE	416-487-9800
THE UNITY CHURCH	173 EGLINTON AVE W	JAMES	416-487-3663
KINGDOM HALL OF JEHOVAH'S WI	256 EGLINTON AVE W		416-488-8469
CASTLEFIELD APOSTOLIC CHURCH	27 CASTLEFIELD AVE	PHIL	416-489-0453
ST CLEMENTS ANGLICAN CHURCH	59 BRIAR HILL AVE	CHRIS	416-483-6664

Human Services	Address	Contact Name	Phone Number	Director	Languages	Eligibility
Alcoholics Anonymous	234 EGLINTON AVE E	<Null>	416-487-5591	<Null>	English ; translators available on request	Anyone with a desire to stop drinking
Alzheimer Society of Toronto	20 EGLINTON AVE W	Françoise Hébert	416-322-6560	Executive Director	English ; other languages may be available	People with Alzheimer's disease or other dementias, their families, caregivers, healthcare professionals, and the general public
Amnesty International	1992 YONGE ST	<Null>	416-363-9933	<Null>	English ; French ; some Spanish	<Null>
ADR Institute of Ontario	234 EGLINTON AVE E	Mary Anne Harnick	416-487-4447	Executive Director	English	<Null>
Big Brothers Big Sisters of Toronto	2345 YONGE ST	Cathy Denyer	416-925-8981	President	English ; interpreters available for other languages	One year commitment requested for Big Brothers and Big Sisters in the original and group-based programs * Adult volunteers -- men and women 18 years and older, 17 years and older for most school-based programs * Little Brothers or Little Sisters -- boys and girls 6-16 years
Addus	40 ORCHARD VIEW BLVD	<Null>	416-544-8847 ext 28	<Null>	English	Adults 21 years and older with developmental disabilities
Easter Seals Canada	40 HOLLY ST	Max Beck	416-932-8382	Chief Executive Officer	English ; French	<Null>
Central Eglinton Community Centre	160 EGLINTON AVE E	Susan Kee	416-392-0511	Executive Director	English	<Null>
YMCA of Greater Toronto	2200 YONGE ST	Barb Williams	416-928-3362 ext 22627	Manager	English	Employers, especially in the manufacturing/warehouse industry
Delisle Youth Services	40 ORCHARD VIEW BLVD	Marg Campbell	416-482-0081	Executive Director	English	Youth 13-18 years and their families
Dying with Dignity Canada	55 EGLINTON AVE E	Wanda Morris	416-486-3998	Executive Director	English	<Null>

Description	Fees	Subjects	Description	Hours
Attend any open meeting * call or visit website for times and locations or for directory of local groups	None	Alcoholism	Weekly group meetings Monday-Sunday	Mon-Fri 9 am-5 pm * after hours -- telephone answered by volunteers, answering service
Call for appointment	Most services free * nominal fees for some educational events	Alzheimer disease ; Caregiver support ; Internet information services ; Missing persons ; Special libraries	Telephone or face to face counselling, on site or at person's home * support groups for family members and people with dementias * resource centre * professional education * speakers, public education, workshops and forums * videos and online resources in over 75 language	Mon-Fri 9 am-5 pm
<Null>	<Null>	Advocacy ; Human rights ; Political imprisonment ; Refugees ; Special libraries ; Torture	International human rights organization * advocates to free prisoners of conscience and to ensure fair and prompt trials for political prisoners * works to abolish torture and the death penalty * library open to public Toronto Refugee Network -- works on behalf of refugee claimants at risk of being sent back to a country where they may face arbitrary detention, torture or execution * call for appointment	Tue-Thu 10 am-5 pm
<Null>	<Null>	Conflict resolution ; Labour relations	Promotes alternative dispute resolution * develops standards for mediation and arbitration * seminars and conferences * searchable database of mediators and arbitrators * affiliate of ADR Institute of Canada	Mon-Fri 9 am-5 pm
Little Brothers and Little Sisters -- call for application form * volunteers -- visit website	None	Friendship services ; Volunteer opportunities	matches a child with a volunteer for 2 hours a week or 4 hours bi-weekly. School Based Programs. In-School Mentoring Program adult mentors 18 years and over are matched with elementary school children for 1 hour per week on school property * in conjunction with Toronto Board of Education *	Mon 8 am-6 pm, Tue-Thu 8:30 am-4:30 pm, Fri 8 am-4 pm * School-based Programs (September-June) -- Mon-Fri 9 am-3:30 pm
Call 416-544-8847 for information	Standard fees	Day programs ; Developmental disabilities ; Employment ; Recreation ; Work placements	Community integration program * experiential learning, work placements * recreation and social activities * capacity 8	Mon-Fri 8:30 am-3 pm
<Null>	<Null>	Advocacy ; Identification cards ; Physical disabilities ; Physical rehabilitation ; Special libraries	Information to member organizations and associations, professionals, persons with disabilities * materials relating to rehabilitation and physical disability * Disability Awareness Training Program -- for employees in service industries *	Mon-Fri 9-5
Legal advice clinic by appointment	Some services free, others nominal fees	Budget counselling ; Child care ; Children ; Community centres ; Computers ; Congregate dining ; Day camps ; Free services ; Income tax clinics ; Internet access ; Legal information ; Parent and child programs ; Recreation ; Registries ; Seniors ; Toy libraries ; Tutoring	Community centre * parent/caregiver and child programs including drop-in * toy library * workshops, seminars * after school program -- homework help and recreational activities for school-aged children * structured recreation programs for children * Saturday and evening courses for adults * summer and March break day camps * programs for persons 50 years and over including luncheon club, day trips, social and recreation activities * income tax clinic (March-April) * financial planning clinic by appointment * legal advice clinic * computer lab with Internet access open to the public * child care registry * information and referral * volunteer opportunities	Mon-Thu 9-9; Fri 9-4; Sat 10-12:30, 1:30-4
Call for information	None	Academic upgrading ; Literacy instruction ; Vocational counselling	Weekly training sessions in the workplace for groups of 5-10 employees * skills assessment to identify training needs	<Null>
<Null>	<Null>	Bisexuals ; Complaints ; Counselling ; Family counselling ; Gays ; Lesbians ; Mental health ; Outreach ; Residential care ; Youth	Community services including counselling, day treatment, residential treatment. Counselling services -- individual and family counselling for concerns related to social, emotional and behavioural needs * referrals to medical and social services. Residential Placement Advisory Committee -- reviews placement of children who reside within the jurisdiction * also reviews placement of children 12 years and over who object to their placement * information on availability of resources. For day and residential treatment, see branch records	<Null>
Membership forms available from office or website	Annual fees -- \$40 individuals, \$55 family, \$75 organizations, \$10 students	Counselling ; Euthanasia ; Living wills ; Special libraries ; Terminal illnesses	Distributes advance directives (Living Wills, Durable Power of Attorney for Health Care) to indicate the care a person wishes to accept or refuse in the event of a life threatening illness * counselling on options for the terminally ill * advocates for the legalization of physician assisted dying * education to the public and health care providers * speakers * library	Mon-Fri 9 am-5 pm

Mood Disorders Association of Ontario	36 EGLINTON AVE W	Karen Liberman	416-486-8046	Executive Director	English	Individuals 14 years and older dealing with mood disorders (depression, bipolar disorder and related anxiety disorders), their families, friends, health professionals, the public
Heart and Stroke Foundation of Ontario	2300 YONGE ST	Rocco Rossi	416-489-7111	President and Chief Executive Officer	English ; French	<Null>
Integra	25 IMPERIAL ST	Mike Faye	416-486-8055	Executive Director	English ; interpretation for other languages may be arranged	Children and youth 8-18 years with social and emotional problems related to specific learning disabilities * must have recent psychological assessment indicating a learning disability and average or above average cognitive reasoning (IQ)
AIESEC Canada	161 EGLINTON AVE E	Vitor De Avellar	416-368-1001	President	English ; French	<Null>
Muscular Dystrophy Canada	2345 YONGE ST	Stacey Lintern	416-488-2699 ext 164	Executive Director Ontario and Nunavut	English	Persons with neuromuscular disorders * registrants must be Canadian citizens, landed immigrants or refugee claimants
Canadian Tire Jumpstart	2180 YONGE ST	Dan Thompspon	<Null>	President	English	Financially disadvantaged children 4-18 years
Ontario Council of Agencies Serving Immigrants	110 EGLINTON AVE W	Debbie Douglas	416-322-4950	Executive Director	English ; French ; Amharic ; Chinese (Cantonese) ; Chinese (Mandarin) ; Lingala ; Russian ; Sinhala ; Spanish ; Swahili ; Tamil	<Null>
Ontario Physiotherapy Association	55 EGLINTON AVE E	Dorianne Sauve	416-322-6866	Chief Executive Officer	English	<Null>
Association of Toronto and Area	120 EGLINTON AVE E	Paul Klotz	416-483-7869	Executive Director	English	<Null>
POINT	200 EGLINTON AVE W	Diane Werner	416-487-2390 ; Community Information Service 416-487-2427	Executive Director	English	<Null>
Project Work	2221 YONGE ST	Bill Wright	416-481-2211	Executive Director	English	Persons 18 years and over who have an intellectual disability or require extra support in learning an entry-level job * must be eligible to work in Canada, TTC independent and motivated to find paid employment

Self referral * registration required for some programs	None	Depression ; Family support ; Financial assistance ; Internet information services ; Manic depression ; Mental health ; Mood disorders ; Special libraries ; Young adults ; Youth	Information, education and support * peer support groups -- see website for locations * advocacy * youth awareness campaign * recovery programs * workshops * online discussion forums * newsletter * speakers bureau * library. Check Up from the Neck Up -- promotes early identification of mood disorders * supports families of youth and adults 14-35 years newly diagnosed with mood disorders and psychosis. Moving Lives Forward Scholarship-- financial assistance to people with mood disorders in acquiring additional education or vocational skills	Mon-Fri 9:30 am-5 pm
<Null>	<Null>	Family support ; First aid ; Health education ; Heart diseases ; Nutrition ; Strokes	Fundraising for research * professional and public education * community presentation programs * Emergency Cardiac Care and cardiopulmonary resuscitation (CPR) training * patient literature and nutrition guides * anti-tobacco legislation advocacy	Mon-Fri 8:30-5
Contact intake worker	Fees for selected services * no one denied service due to inability to pay * subsidies available	Camps ; Case management ; Children ; Family counselling ; Family support ; Health assessments ; Learning disabilities ; Mental health	Mental health centre * assessment, planning, case coordination and family counselling * parent support groups * workshops * consultation to schools, social agencies and community groups * Camp Towhee-- residential therapeutic summer camp for children and youth 10-18 years	Mon-Thu 9 am-8 pm, Fri 9 am-5 pm * evening hours during July and August as required
<Null>	Vary	Leadership training ; Overseas employment ; Students ; Young adults ; Youth	Internship program for youth * leadership development * conferences * international work experience	Mon-Fri 9 am-6 pm
Funding application available on website	Free	Advocacy ; Assistive devices ; Financial assistance ; Muscular dystrophy ; Neurological diseases	Information, advocacy and referrals to home support services * funding available for some prescribed equipment * research funding * community workshops * education materials	Mon-Fri 8:30-4:30
Apply in mid-January for spring/summer programs, early July for fall/winter programs	<Null>	Children ; Financial assistance ; Recreation ; Sports	Grants for participation in sports and recreation programs	<Null>
Application package available on website	Annual membership fee based on organization's budget -- \$100 to \$2000	Coordinating organizations ; Immigrants ; Immigration ; Publications ; Refugees ; Social action	Umbrella organization of community agencies that serve immigrants and refugees * coordinates response to sector concerns * liaison and advice to government on policies affecting immigrants * professional development and training * information exchange and coordination among member agencies * publications	Mon-Fri 9 am-5 pm * July-August -- Mon-Thu 9 am-5 pm, Fri 9 am-1 pm
<Null>	<Null>	Information and referral ; Professional associations	Professional association * telephone assistance in locating a physiotherapist	Mon-Fri 8:30 am-5 pm
Call for appointment	None	Anti abortion groups ; Special libraries	Educational pro-life group * information on abortion and adoption * library * speakers * conferences	Mon-Fri 9:30 am-5:30 pm
<Null>	Introductory MS Word course -- \$50	Babysitting ; Caregiver support ; Child care ; Children ; Community development ; Community information centres ; Computers ; Employment ; Fax machines ; Free services ; Income tax clinics ; Information and referral ; Internet access ; Landlord and tenant rights ; Photocopiers ; Recreation ; Registries ; Respite care ; Settlement services ; Social action ; Special libraries ; Tutoring	People and Organizations in North Toronto -- information and referral for north Toronto * participates in CAP (Community Access Program) -- free Internet access, Internet/e-mail/scanner classes * fax, photocopier * seasonal income tax clinic * nanny and caregiver support group * registries -- babysitting, child care, tutors, caregiver relief * publications * advocacy * summer gardening program for children * workshops * social planning, development of social and health services.	Office -- Mon-Fri 9 am-5 pm * computer room -- Mon-Fri 9:30 am-4:30 pm * also one evening per week
Contact intake coordinator	<Null>	Developmental disabilities ; Disabilities ; Employment ; Job search training ; Life skills training ; Vocational counselling ; Vocational rehabilitation ; Vocational training ; Work placements	Individualized job search assistance * employment related life skills training * variety of unpaid 2-day work placements to explore job options * paid work placements include on-the-job training and support from a job coach	Mon-Fri 9 am-5 pm

Toronto Catholic District School Board	90 EGLINTON AVE E	<Null>	416-397-6600	<Null>	English ; French - (by appointment) ; Chinese (Cantonese) ; Chinese (Mandarin) ; Dari ; Farsi ; Hebrew ; Italian ; Pashto ; Spanish ; Tamil	Landed immigrants, Convention refugees, those applying for landed status or live-in caregiver program * English as a Second Language (ESL) classes -- open to all
VR Placement	2221 YONGE ST	Soo Mathers	416-483-0611	Executive Director	English	Ontario Disability Support Program (ODSP) recipients seeking employment * employers
VHA Home HealthCare	30 SOUDAN AVE	Carol Annett	416-489-2500	President and Chief Executive Officer	English ; variety of languages spoken by staff	<Null>
VOICE for Hearing Impaired Children	161 EGLINTON AVE E	Norah-Lynn McIntyre	416-487-7719	Executive Director	English	<Null>
Working Skills Centre	55 EGLINTON AVE E	Honey Crossley	416-703-7770	Executive Director	English	Open to all
YMCA of Greater Toronto	2200 YONGE ST	Medhat Mahdy	416-928-9622	President and Chief Executive Officer	English	Open to all
Independent Learning Centre	2180 YONGE ST	Sarah Irwin	English 416-484-2704 ; French 416-484-2722	Managing Director	English ; French	<Null>

<Null>	Free	Accompaniment services ; Counselling ; English as a second language ; Form filling ; Housing facilities ; Immigrants ; Information and referral ; Interpretation ; Orientation ; Refugees ; Settlement services ; Sponsorship ; Translation	English as a Second Language (ESL) classes * participates in LINC (Language Instruction for Newcomers to Canada) upon assessment by YMCA of Greater Toronto, transportation subsidy and child care available -- see separate entry * academic preparation, essay writing, listening and conversation. Immigrant Settlement and Adaptation Program -- orientation, integration * settlement counselling * information and referral * translation and interpretation * escort services * sponsorship assistance * volunteer placement * assistance finding housing * form filling. Specialized Language Training (SLT) -- for child care and home health care workers. Enhanced Language Training (ELT) -- for ESL instructors * volunteer placement	Mon-Fri 9-3, Sat 9-1 * also Tue, Thu 6 pm-9 pm
Call for appointment	Free	Disabilities ; Employment ; Job search training ; Resumes	Employment counselling * job development * skills evaluation * on the job training * job coaching * job search techniques * resume writing, cover letters, interviews * workshops * labour market information	Mon-Fri 9-5
Call Community Intake department * may be referred to local Community Care Access Centre, or to Toronto. Employment and Social Services * those on limited incomes may be eligible for United Way assistance	Available on request	Attendant care ; Children ; Cleaning services ; Disabilities ; Foot care ; Home help ; Homemaking ; Mental health ; Multiple births ; Nursing care ; Occupational therapy ; Physiotherapy ; Postnatal care ; Respite care ; Social work services ; Temporary child care	In-home nursing, attendant and palliative care, personal support services, homemaking, family and child care, caregiver relief and emergency child care, infant and multiple birth support, foot care * occupational therapy, physiotherapy, dietitian, speech-language pathologist, social work services * health and wellness programs * also available on fee-for-service basis for those ineligible for financial assistance. Extreme Cleaning Service-- one-time home cleaning for individuals living with mental health disorders, at imminent risk of losing their housing due to being unable to keep their home environment up to public health standards * follow-up links to community supports * free * one-time heavy-duty cleaning assistance also available on fee-for-service basis to general population	Office -- Mon-Fri 8:30 am-4:30 pm * customer service centre -- 365 days a year, 6:30 am-9:30 pm
<Null>	Membership fee -- first year is free, following years are \$50 per family per year	Children ; Family support ; Impaired hearing ; Special libraries	Emotional and technical support * Auditory-Verbal Therapy * parent support groups * workshops * video and print library for members * advocacy * public education * research	Mon-Fri 9-5
Call, drop in, visit website or attend information workshop held Thursdays 9:30 am	Vary for different services * some services covered by Ontario Works	Businesses ; Computer training ; Employment ; Resumes ; Vocational training ; Work placements	Settlement information and referral * job search workshops * life skills * job skills training -- computerized office administration, supply chain, computerized accounting, bookkeeping, medical terminology and billing, reception, desktop publishing * programs run 7-21 weeks * placement services Other services include Academy of Computer and Employment Skills (see separate entry)	Mon-Fri 8:30-6
<Null>	<Null>	Children ; Day camps ; Employment ; Health education ; Leadership training ; Physical disabilities ; Recreation ; Settlement services ; Sports and fitness centres ; Youth	All programs may be reached by calling 416-928-9622. Health and social services * employment and community services * counselling and youth services * settlement information and referral * assessment and referral for Language Instruction for Newcomers to Canada (LINC) program * see branch records for details. Children's Services -- offered at various YMCA and community locations * licenced child care * before and after school programs * summer day camps * residential summer camp, family camp and leadership programs at Camp Pine Crest for children and youth 4-16 years *Family Development Centre-- see branch record YMCA Health, Fitness and Recreation Centres -- at 4 locations (see branch records) * fitness, health education and recreation programs for all ages and abilities, individuals, couples and families * fitness testing * babysitting available during programs * membership fees for above services, financial assistance may be available	Mon-Fri 9 am-8 pm
<Null>	High school credit courses -- \$40 * GED testing -- \$100 (non-refundable)	Academic upgrading ; Distance education ; Education ; English as a second language ; Physical disabilities	Secondary school courses in English or French through independent study * English as a Second Language (ESL) * can accommodate students with special needs * counselling in person, by telephone, or by correspondence * academic upgrading * (GED) testing for high school equivalency * online resources including free online tutoring and homework help * managed by TVOntario	Mon-Fri 8:30-5

Ontario Energy Board	2300 YONGE ST	Aleck Dadson	416-314-2455	Chief Operating Officer	English	<Null>
YMCA of Greater Toronto	2200 YONGE ST	<Null>	416-928-3362 ext 22609	<Null>	English	Individuals 16 years and older who need help to find, change or establish a career * employers and recruiters
YMCA of Greater Toronto	2200 YONGE ST	<Null>	416-928-3362 ext 22627	<Null>	English	Adults 19 years and older who are out of school, with spoken facility in English [or French] and literacy skills below Ontario Grade 12 level
Working Skills Centre	55 EGLINTON AVE E	Christina Chu	647-258-0388 ; 416-703-7770	Program Manager	English	Immigrants 18 years and older who are job-ready but require Canadian work experience
Project Work	2221 YONGE ST	Bill Wright	416-481-2211	Executive Director	English	Persons 18 years and older who have an intellectual disability or require extra support in learning an entry-level job * must be eligible to work in Canada
Camp Awakening	150 EGLINTON AVE E	Tracey Morley	416-487-8400	Executive Director	English	Children and youth 9-18 years with physical disabilities
Second Mile Club of Toronto	174 ORCHARD VIEW BLVD	<Null>	416-481-4416	<Null>	English	Seniors 55 years and older
Horizons for Youth	411 DUPLEX AVE	<Null>	416-483-8400	<Null>	English	Young men and women 16-24 years who are living in a shelter, transitionally housed or recently housed * must be eligible to work in Canada, looking for paid work and not receiving Employment Insurance
Academy of Computer and Employment Skills	55 EGLINTON AVE E	Honey Crossley	416-703-7770 ext 247	Executive Director	English	Canadian Language Benchmark Level 4 to Level 7 depending on course application

<Null>	<Null>	Consumer protection	Regulates natural gas and electricity utilities * licenses all participants in the electricity sector as well as natural gas marketers who sell to low volume customers * complaint resolution for consumers * information resource centre	Mon-Fri 8:30 am-5 pm
Call to register	Fee for service * subsidy may be available	Employment ; Job search training ; Vocational counselling	One-on-one vocational testing and counselling * job search skills including mock interviews * labour market information * follow-up support sessions for 3 years * support for employers with candidate selection testing and employee development	Tue-Wed, Fri 9 am-5 pm * Counselling -- Mon 11 am-7 pm
Call for information and to book an appointment	None	Academic upgrading ; Life skills training ; Literacy instruction ; Vocational counselling	Literacy, numeracy and essential skills services that help individuals achieve goals related to further education and training, employment or increased independence * support in clarifying upgrading goals and developing a training plan to achieve them. Also academic upgrading that helps individuals develop the necessary skills for entry into post-secondary education, apprenticeship training or employment Program delivered in various locations * small group instruction, one-to-one tutoring, computer-based training * ongoing intake	Mon-Thu 9 am-8 pm
Continuous recruitment, assessment -- call for information	Free	Immigrants ; Vocational training	Simulated business provides relevant work experience in supply chain, information technology, accounting, administration, human resources, sales/marketing * participants with appropriate training learn Canadian business practices * program runs up to 12 weeks	Mon-Thu 9-5, Fri 9-2:30
Contact intake coordinator	<Null>	Developmental disabilities ; Disabilities ; Employment ; Job search training ; Vocational counselling ; Vocational rehabilitation ; Vocational training	Support and Job Retention Program-- ongoing support and counselling in finding and maintaining paid employment * assistance learning new job duties * on site work visits and telephone contact to assist in solving work problems * resume updating. Employment Resource Program-- available to current and past Project Work participants * walk-in job search centre * access to computers, Internet, fax, photocopier, telephone * resource materials, job listings, labour market information Employment for All-- for Ontario Works recipients who have completed the Supported Employment Program (see branch record) * on-the-job coaching, job maintenance support. Other Services-- customized plans can be developed on a fee-for-service basis including employment training, employment assessment, employment preparation workshops, job placement, job coaching and job maintenance	Mon-Fri 9 am-5 pm
<Null>	\$1500 for 2 weeks * fee assistance available	Camps ; Physical disabilities	Residential, integrated summer camp * campers must be reasonably independent in activities of daily living, comfortable with boats, water and group activities Located in Haliburton Highlands (at Kilcoo Camp for boys) and the Land O'Lakes Tourist Region (at Camp Oconto for girls) * transportation from Toronto	Mon-Fri 9 am-5 pm
<Null>	\$30 annual membership fee	Foot care ; Recreation ; Seniors	Social, education and recreation programs * foot clinic	Mon-Fri 9 am-4 pm * closed August
Application form available by e-mailing one of agency contacts * complete and return by fax, with assistance from support worker or case manager	None	Employment ; Homeless youth ; Life skills training	Intensive 5 week pre-employment and skills training program * life skills * access to computers * unpaid job placements * job development * ongoing support * referrals to GED (high school equivalency), apprenticeship, and vocational training programs * referrals for housing and other basic needs * TTC tokens	Mon-Fri 9 am-5 pm
Information sessions Thursday 9 am * academic assessment and interview required * call, e-mail or drop in to make an appointment * day and evening appointments available	Vary * range for full tuition, books and transcript \$3,500 - \$4,500 * financial assistance available * Bursary and Scholarship Program * some fees covered through Skills Training Directly Linked to Employment for Ontario Works recipients	Colleges ; Vocational training	Registered private career college * vocational diploma programs including Computerized Office Administration, Computerized Accounting, Supply Chain Clerk/Analyst, Administrative Assistant with Desktop Publishing, Office Clerk/Receptionist, Medical Receptionist Initiative of Working Skills Centre -- see separate entry	Mon-Fri 8:30 am-6 pm * some evenings and Saturdays

Toronto Community Employment Services	2221 YONGE ST	<Null>	416-488-0084 ; Employment programs 416-488-0084 ext 201	<Null>	English	Self-service information and resources -- anyone, including people with jobs, those who are under-employed, people looking for work, students, apprentices, internationally trained individuals, employers Assisted services (such as supported job search, job matching and placement, job retention services) -- people who are unemployed and out of school Employers can get help in identifying their human resource skill requirements, matching of position/workplace needs to participants' skills, capabilities, interests and experience, and support for developing on-the-job training plans and monitoring of placements to support success and retention
Whyy Mee Family Counselling Foundation of Toronto	59 BRIAR HILL AVE	Eugenia Pearson	416-481-5462	Executive Director/Education Consultant	English ; West Indian dialects ; referral to interpreters	Open to all * Youth/New Canadian Courtworker Program -- members of African, Black, West Indian and other ethnospecific groups who are in conflict with the law for the first time
Midaynta Community Services	1992 YONGE ST	Mahad Yusef	416-544-1992	Executive Director	English ; Somali ; translation of documents -- Arabic, Italian, Romanian, Somali	Open to all newcomers
Association of Early Childhood Educators Ontario	40 ORCHARD VIEW BLVD	Eduarda Sousa	416-487-3157	Executive Director	English	<Null>
AlphaPlus	161 EGLINTON AVE E	Michael Coteau	416-322-1012	Executive Director	English ; French	Organizations, educators and learners from adult literacy and basic skills programs, including programs for deaf, Native, anglophone and francophone communities
Toronto Transit Commission	1900 YONGE ST	Blossom D'Silva	Transit information 416-393-4636 (416-393-INFO) ; Customer service 416-393-3030	Supervisor, Customer Information	English ; telephone interpretation service available for access to services	<Null>

Call or drop in * for general information on Employment Ontario services call the toll-free Employment Ontario hotline at 1-800-387-5656 (TTY 1-866-533-6339) or visit www.tcu.gov.on.ca/eng/employmentontario/	None	Employment ; Job search training ; Resumes ; Vocational counselling ; Vocational training	Helps Ontarians find sustainable employment * assessment of skills, capabilities, interests and experience * job search strategies, including resume preparation * information about different careers and occupations, the local labour market, employment and training opportunities * on-the-job training and/or work experience and, in some cases, additional support to help maintain employment * information about all Employment Ontario programs and services * access to Second Career program to provide laid-off workers with skills training for high-demand occupations * information about, and referral to, other community services and supports Incorporates services previously provided through Job Connect, Employment Assistance Services (EAS), Employment Resource Centres and other programs * Summer Jobs Service program remains separate for the time being	Mon-Fri 8:30 am-4:30 pm
<Null>	Sliding scale	Advocacy ; African community ; Black community ; Counselling ; Court assistance ; Family counselling ; Legal information ; Parenting support ; Separation counselling ; Visible minorities ; West Indian community	Culturally sensitive social and skills development services * access to appropriate legal services and support * adult, youth, group, family violence, divorce and family counselling * learning disability assessment * help with child and parent conflict in schools and with Children's Aid Society * support for seniors dealing with social services issues * parenting skills * information and referral * training and workshops Youth/New Canadian Courtworker Program -- court support * assistance in understanding their situation and the criminal legal system * family counselling before and after court * referrals to other social services	Mon-Fri 9 am-5 pm * evening appointments available
Call or drop in	None	Counselling ; Employment ; Family counselling ; Family violence ; Form filling ; Housing facilities ; Immigrants ; Immigration ; Information and referral ; Interpretation ; Job search training ; Leadership training ; Official documents ; Orientation ; Recreation ; Refugees ; Resumes ; Seniors ; Settlement services ; Somali community ; Sponsorship ; Translation ; Vocational counselling ; Young adults ; Youth	Assists in completion of sponsorship and landing forms * monitors sponsorship and immigration cases * follow up representation in Canada and overseas * settlement and orientation * referrals * general counselling * translation and interpretation * employment counselling * documentation * housing assistance * Housing Connections (see separate entry) Community Partner -- assistance with housing search and application process * integration assistance * family violence and child welfare counselling * youth leadership development * youth sports and recreation * seniors services Job Search Workshops (JSW) -- for new immigrants and Convention refugees, legally entitled to work in Canada * 3 or 4 day job search techniques workshops, covering labour market information, access to trades and professions, resume preparation, networking * extensive individual assistance	Mon-Tue, Thu-Fri 9 am-4:15 pm; Wed 9 am-8 pm
<Null>	Membership	Professional associations	Professional organization * no service for general public * professional development, networking, certification	Mon-Fri 9 am-5 pm
<Null>	<Null>	Academic upgrading ; Deafness ; Education ; First language literacy programs ; French-speaking communities ; Internet information services ; Literacy ; Literacy instruction ; Native peoples ; Special libraries	Information, resources and support for adult literacy agencies and educators * working to increase adult literacy skills through the use of digital technologies * newsletter	Mon-Fri 9-5
<Null>	<Null>	Public transportation ; Seniors discounts	Route, schedule and fare information * lost articles 416-393-4100 * complaints, commendations 416-393-3030, TTY 416-481-2523 * Lift-Line 416-539-5438 or 416-393-4636 (option 5, 2) to confirm elevator access TTC photo ID card for reduced fares available for \$5.25 at Sherbourne station Monday-Friday 3 pm-7 pm, Saturday 10 am-4 pm, also first and last business day of each month 10 am-7 pm * for discounts for veterans and persons who are visually impaired, call Veterans Affairs Canada or the CNIB -- see separate entries	Mon-Sun 8 am-6 pm * closed on statutory holidays

Adoption Council of Ontario	36 EGLINTON AVE W	Pat Convery	416-482-0021	Executive Director	English	<Null>
Anne Johnston Health Station	2398 YONGE ST	Brenda McNeill	416-486-8666	Executive Director	English ; Arabic ; Portuguese ; Turkish ; interpreters may be arranged for other languages	<Null>
Toronto. Employment and Social Services	150 EGLINTON AVE E	Cathy Smith	Switchboard 416-397- 1800 ; Intake 416-397- 5100 ; Employment Resource Centre 416- 397-1788	Director Social Services	English ; French	Youth and adults 18 years and older in financial need, including seniors, and employable youth 16 or 17 who cannot live at home but are attending school or seeking employment * serves those living in postal code areas: M4G, M4H, M4N, M4P, M4R, M4S, M4T, M4V, M4W, M5M, M5N, M5P, M5R, M6C, M6G

Appointments preferred	Optional membership fee	Adoption ; Special libraries	Adoption resource centre * seminars for prospective adoptive parents * library * newsletter * http://www.adoptontario.ca/ - secure, bilingual, online photolisting of children for prospective families * secure, online databank for adoption professionals containing information on families with completed home studies and children awaiting adoption * support for families and adoption professionals by e-mail and phone	Mon-Fri 9:30 am-4:30 pm
<Null>	Most services free	Adult day care ; AIDS ; Alzheimer disease ; Community health centres ; Diabetes ; Doctors ; Family planning ; Foot care ; Geriatric care ; Health education ; Health services ; HIV tests ; Naturopathy ; Nutrition ; Occupational therapy ; Physical disabilities ; Safety ; Seniors ; Sexuality ; Sexually transmitted diseases ; Special libraries ; Testing ; Young adults ; Youth	Community health centre with focus on youth, seniors and persons with physical disabilities * in-home primary medical care for seniors, including occupational therapy, medication reviews, home safety assessment * foot care * nutrition counselling * clinic for youth 13-24 years including birth control, sexuality, testing for sexually transmitted diseases and HIV * Barrier Free Health Zone-- primary medical care for persons 18 years and over with physical disabilities * health education promotion, seminars and workshops * referrals to health and social services * resource centre * no Ontario Health Insurance required for general services. Adult day program for frail elderly and those with Alzheimer Disease * call to apply * transportation available * partnership with SPRINT. Toronto Diabetes Prevention Program 416-486-8666 ext 299 -- nutrition counselling * individual and group counselling * foot care * home visits * community outreach * workshops. SexAbility-- sexual health information in person and by phone for youth and young adults 14-29 years with mobility disabilities * peer counselling * workshops, presentations, social events * call for appointment	Mon-Tue, Thu-Fri 8:30 am-5:30 pm; Wed 8:30 am-7 pm; Sat 9 am-4 pm
<Null>	<Null>	Assistive devices ; Computers ; Dental services ; Drugs ; Emergency financial assistance ; Fax machines ; Financial assistance ; Food ; Free services ; Internet access ; Job search training ; Photocopiers ; Seniors ; Social assistance ; Telephones ; Vision aids	Delivers the Ontario Works program * provides employment supports and financial assistance * for more detail see main record for Toronto. Employment and Social Services	Mon-Fri 8:30 am-4:30 pm

Ontario Network for the Prevention of Elder Abuse	234 EGLINTON AVE E	Teri Kay	416-916-6728	Executive Director	English ; educational resources available in other languages * Language Line Services provides access to service in over 150 languages	<Null>
Delisle Youth Services	45 HILLSDALE AVE E	<Null>	416-923-7440	<Null>	English	Youth 13-18 years requiring residential placement
Centre for Community Learning & Development	110 EGLINTON AVE W	<Null>	416-968-2236	<Null>	English	Organizations that prepare information for the general public
Cystic Fibrosis Canada	2221 YONGE ST	Cathleen Morrison	416-485-9149	Chief Executive Officer	English ; French	<Null>
Addus	40 ORCHARD VIEW BLVD	Mary Vieni	416-544-8847	Executive Director	English	Adults with developmental disabilities
Fairlawn Medical Centre	2401 YONGE ST	<Null>	416-322-9933	<Null>	English	<Null>
Out of the Cold. Meal Programs	59 BRIAR HILL AVE	<Null>	416-483-6664	<Null>	English	<Null>
Walk-in Medical Clinic, Yonge/Davisville	1910 YONGE ST	<Null>	416-483-2000	<Null>	English	<Null>
Raising the Roof	263 EGLINTON AVE W	Carolann Barr	416-481-1838	Executive Director	English	<Null>
College of Psychologists of Ontario	110 EGLINTON AVE W	Catherine Yarrow	416-961-8817	Registrar and Executive Director	English	<Null>

<Null>	Membership fee -- \$25, seniors/students -- \$15	Elder abuse	Prevention of elder abuse and neglect * education of professionals and lay persons * advocacy for systems and legislative action * information sharing * sensitivity to multicultural and native issues. Senior Safety Line 1-866-299-1011 -- 24 hours a day * variety of resource materials, nominal fee	Mon-Fri 9-5
Call Centralized Access to Residential Services (CARS) at 416-482-7884	<Null>	Aftercare ; Family counselling ; Mental health ; Residential care ; Youth	Treatment centre * family counselling * precare and follow up * capacity 8	<Null>
<Null>	Fee-for-service	Consultants ; Literacy	Training and editorial consulting service with an emphasis on clear language and presentation	Mon-Fri 9:30-5:30
<Null>	<Null>	Cystic fibrosis	Information * referral to chapters across Canada	Mon-Fri 9 am-5 pm
Call for information	Standard fees	Day programs ; Developmental disabilities ; Employment ; Recreation	Community integration programs at three locations -- see branch records for details Community Connections Program -- community coaching, transportation training * internal vocational services to obtain and maintain employment * after hours Social Club -- Tuesday, Thursday 3-6 pm	Mon-Fri 8 am-3 pm
<Null>	<Null>	Walk-in medical clinics	Walk-in medical clinic	Call first as hours may vary
<Null>	<Null>	Clothing ; Food ; Free services	Hot meal * clothing * information and referral	Throughout the year -- Wed 9:30 am-1 pm
<Null>	<Null>	Walk-in medical clinics	Walk-in medical clinic	Call first as hours may vary
<Null>	<Null>	Funding	Provides grants to charitable agencies addressing long term solutions to homelessness no direct service to the public	Mon-Fri 9 am-5 pm
<Null>	<Null>	Complaints ; Psychologists ; Regulatory agencies	Regulatory college * sets standards and guidelines for conduct and practice * investigates complaints * council meetings and discipline hearings open to the public	Mon-Fri 9 am-5 pm

YMCA of Greater Toronto	2200 YONGE ST	Kim Charteris	English 416-928-3362 ext 22552 * French 416-928-3362 ext 22562	General Manager	English ; French	Agencies working with children and youth 8-24 years
Certified General Accountants of Ontario	240 EGLINTON AVE E	Doug Brooks	416-322-6520	Chief Executive Officer	English	<Null>
Toronto Community Employment Services	2221 YONGE ST	Laila Imeish	416-488-0084	Executive Director	English ; Arabic ; Chinese (Mandarin) ; Spanish	<Null>
Addus	200 EGLINTON AVE W	<Null>	416-481-9930	<Null>	English	Adults 21 years and older with developmental disabilities
Link Up Employment Services for Persons with Disabilities	55 EGLINTON AVE E	Bob Santos	416-413-4922	National Chief Executive Officer	English ; American Sign Language (ASL) ; Arabic ; Italian ; Portuguese ; Somali ; Spanish ; Tamil	Unemployed persons 18-65 years with a disability as defined by the Federal Employment Equity Act who have not received Employment Insurance (EI) benefits in the last three years

<Null>	None	Children ; Family support ; Gambling ; Young adults ; Youth	Prevention and education around gambling issues * developmentally appropriate presentations for 4 different age groups (8-10 years, 11-14 years, 15-18 years, 19-24 years) * workshops for parents, guardians, role models and professionals involved in youth's lives	Mon-Fri 9 am-5 pm * flexible hours for presentations
<Null>	<Null>	Professional associations	Professional association * education, training and professional support services * accountant referral service * complaint procedure * affiliated with Certified General Accountants Association of Canada	Mon-Fri 8:30 am-4:30 pm
Walk in or call to arrange appointment	None	Computers ; Employment ; Fax machines ; Immigrants ; Internet access ; Job search training ; Refugees ; Resumes ; Vocational counselling ; Women	Career Assessment and Counselling Service -- for persons 16 years and over who are in the process of developing an educational plan, making a career change, or need more focus in their career search * individual career counselling * career assessment profiles * individual career coaching * assistance with long and short term employment goals * career exploration one-on-one session * computer, internet, fax Job Finding Workshop-- for immigrants and Convention refugees, legally entitled to work in Canada * 3 or 4 day job search techniques workshops, covering labour market information, access to trades and professions, resume preparation, networking * extensive individual assistance. Women at Work -- orientation to the Canadian labour market, for immigrants and Convention refugees, legally entitled to work in Canada * 3 or 4 day job search techniques workshops, covering labour market information, access to trades and professions, resume preparation, networking * extensive individual assistance	Mon-Fri 8:30 am-4:30 pm
Call 416-544-8847 for information	Standard fees	Day programs ; Developmental disabilities ; Employment ; Recreation ; Work placements	Community integration program * experiential learning, work placements * recreation and social activities * capacity 12	Mon-Fri 8:30 am-3 pm
Call to register for orientation/information session	<Null>	Disabilities ; Employment ; Mental health ; Vocational training	Links persons with disabilities to the labour market through job search assistance * employment services -- recruitment and placement for permanent or temporary positions, wage subsidies * also office in Woodbridge 905-850-6838	Mon-Fri 9-4:30